



**LABORATORY GROWN DIAMOND REPORT**

December 18, 2025  
 IGI Report Number **LG756592786**  
 Description **LABORATORY GROWN DIAMOND**  
 Shape and Cutting Style **OVAL BRILLIANT**  
 Measurements **6.65 X 4.54 X 2.75 MM**

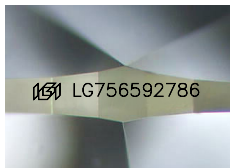
**GRADING RESULTS**

Carat Weight **0.53 CARAT**  
 Color Grade **E**  
 Clarity Grade **VS 2**

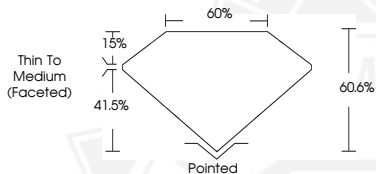
**ADDITIONAL GRADING INFORMATION**

Polish **VERY GOOD**  
 Symmetry **GOOD**  
 Fluorescence **NONE**  
 Inscription(s) **IGI LG756592786**

Comments: This Laboratory Grown Diamond was created by Chemical Vapor Deposition (CVD) growth process. Type IIa



Sample Image Used



December 18, 2025  
 IGI Report Number **LG756592786**  
**OVAL BRILLIANT**  
**LABORATORY GROWN DIAMOND**  
**6.65 X 4.54 X 2.75 MM**  
 Carat Weight **0.53 CARAT**  
 Color Grade **E**  
 Clarity Grade **VS 2**  
 Polish **VERY GOOD**  
 Symmetry **GOOD**  
 Fluorescence **NONE**  
 Inscription(s) **IGI LG756592786**

Comments: This Laboratory Grown Diamond was created by Chemical Vapor Deposition (CVD) growth process. Type IIa



December 18, 2025  
 IGI Report Number **LG756592786**  
**OVAL BRILLIANT**  
**LABORATORY GROWN DIAMOND**  
**6.65 X 4.54 X 2.75 MM**  
 Carat Weight **0.53 CARAT**  
 Color Grade **E**  
 Clarity Grade **VS 2**  
 Polish **VERY GOOD**  
 Symmetry **GOOD**  
 Fluorescence **NONE**  
 Inscription(s) **IGI LG756592786**

Comments: This Laboratory Grown Diamond was created by Chemical Vapor Deposition (CVD) growth process. Type IIa



THIS DOCUMENT WAS PRODUCED WITH THE FOLLOWING SECURITY MEASURES: SPECIAL DOCUMENT PAPER, INK SCREENS, WATERMARK, BACKGROUND DESIGNS, HOLOGRAM AND OTHER SECURITY FEATURES NOT LISTED AND DO EXCEED DOCUMENT SECURITY INDUSTRY GUIDELINES.