



**ELECTRONIC COPY**

## LABORATORY GROWN DIAMOND REPORT

December 13, 2025	
IGI Report Number	LG756593509
Description	LABORATORY GROWN DIAMOND
Shape and Cutting Style	EMERALD CUT
Measurements	9.68 X 6.80 X 4.48 MM

## GRADING RESULTS

Carat Weight	2.85 CARATS
Color Grade	G
Clarity Grade	VS 2

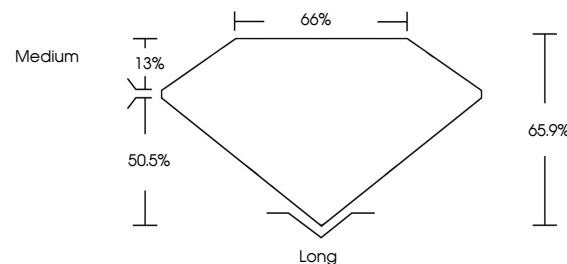
### ADDITIONAL GRADING INFORMATION

Polish	EXCELLENT
Symmetry	EXCELLENT
Fluorescence	NONE
Inscription(s)	151 LG756593509

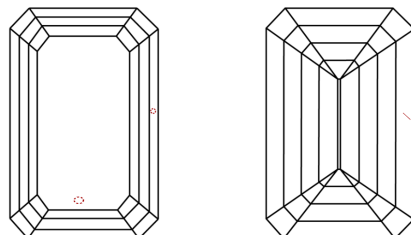
Comments: This Laboratory Grown Diamond was created by Chemical Vapor Deposition (CVD) growth process.  
Type IIa

LG756593509  
Report verification at [igi.org](https://igi.org)

## PROPORTIONS

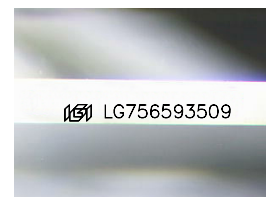


## CLARITY CHARACTERISTICS



## KEY TO SYMBOLS

Red symbols indicate internal characteristics.  
Green symbols indicate external characteristics.



Sample Image Used

## COLOR

D E F G H I J Faint Very Light Light

## CLARITY

FL	IF	VVS <sup>1-2</sup>	VS <sup>1-2</sup>	SI <sup>1-2</sup>	I <sup>1-3</sup>
Flawless	Internally Flawless	Very Very Slightly Included	Very Slightly Included	Slightly Included	Included

## LABORATORY GROWN DIAMOND REPORT



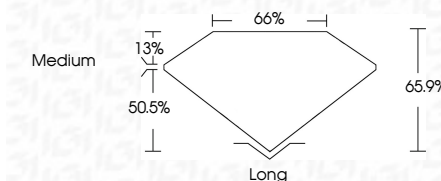
December 13, 2025	
IGI Report Number	LG756593509
Description	LABORATORY GROWN DIAMOND
Shape and Cutting Style	EMERALD CUT
Measurements	9.68 X 6.80 X 4.48 MM

## GRADING RESULTS

Carat Weight	2.85 CARATS
Color Grade	G
Clarity Grade	VS 2

### ADDITIONAL GRADING INFORMATION

Polish	EXCELLENT
Symmetry	EXCELLENT
Fluorescence	NONE
Inscription(s)	 LG756593509
<p>Comments: This Laboratory Grown Diamond was created by Chemical Vapor Deposition (CVD) growth process.</p> <p>Type IIa</p>	



© IGI 2020, International Gemological Institute

FD - 10 20



THIS DOCUMENT WAS PRODUCED WITH THE FOLLOWING SECURITY MEASURES: SPECIAL DOCUMENT PAPER, INK SCREENS, WATERMARK, BACKGROUND DESIGNS, HOLOGRAM AND OTHER SECURITY FEATURES NOT LISTED AND DO EXCEED DOCUMENT SECURITY INDUSTRY GUIDELINES

December 13, 2025  
GI Report No LG756593509

<p> <b>GL Report No</b> LG75593909  <b>LABORANT CUT</b>  <b>4.88 X 4.80 X 4.48 MM</b> </p>	<p> <b>Carat Weight</b>  <b>Color Grade</b>  <b>Clarity Grade</b>  <b>Depth</b>  <b>Table</b>  <b>Girdle</b> </p>	<p> <b>2.85 CARATS</b>  <b>G</b>  <b>VS 2</b>  <b>65.9%</b>  <b>65%</b>  <b>Medium</b> </p>	<p> <b>Long</b>  <b>EXCELLENT</b>  <b>EXCELLENT</b>  <b>NONE</b>  <b>VERY MINOR</b> </p>
--	---	---	--

**Comments:**  
This Laboratory Grown Diamond was  
created by Chemical Vapor Deposition  
(CVD) growth process.

**www.igi.org**