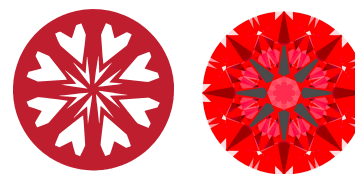




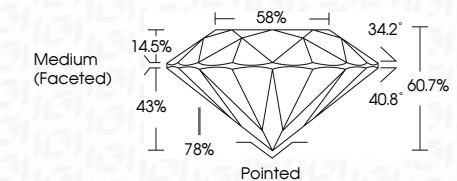
Light Performance Grade: Exceptional



Structured Light Environment Representation



December 12, 2025 IGI Report Number LG757507621 Description LABORATORY GROWN DIAMOND Shape and Cutting Style ROUND BRILLIANT Measurements 9.18 - 9.27 X 5.59 MM GRADING RESULTS Carat Weight 2.89 CARATS Color Grade D Clarity Grade VVS 2 Cut Grade IDEAL



ADDITIONAL GRADING INFORMATION Polish EXCELLENT Symmetry EXCELLENT Fluorescence NONE Inscription(s) IGI LG757507621 Comments: HEARTS & ARROWS This Laboratory Grown Diamond was created by Chemical Vapor Deposition (CVD) growth process. Type IIa

ELECTRONIC COPY LABORATORY GROWN DIAMOND REPORT

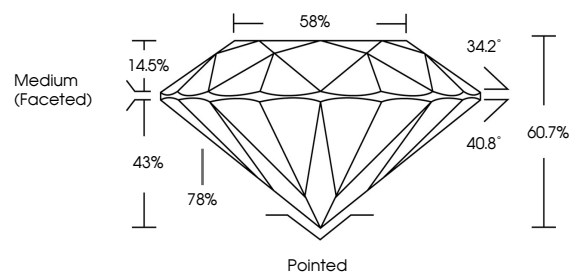
December 12, 2025 IGI Report Number LG757507621 Description LABORATORY GROWN DIAMOND Shape and Cutting Style ROUND BRILLIANT Measurements 9.18 - 9.27 x 5.59 mm

GRADING RESULTS Carat Weight 2.89 CARATS Color Grade D Clarity Grade VVS 2 Cut Grade IDEAL

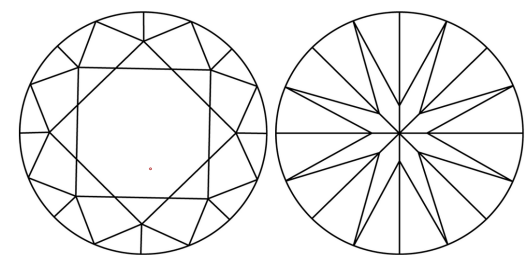
ADDITIONAL GRADING INFORMATION Polish EXCELLENT Symmetry EXCELLENT Fluorescence NONE Inscription(s) IGI LG757507621

Comments: HEARTS & ARROWS This Laboratory Grown Diamond was created by Chemical Vapor Deposition (CVD) growth process. Type IIa

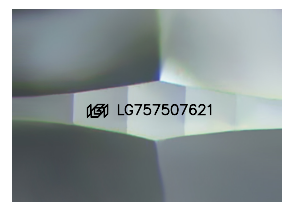
PROPORTIONS



CLARITY CHARACTERISTICS



KEY TO SYMBOLS Red symbols indicate internal characteristics. Green symbols indicate external characteristics.



Sample Image Used



Summary table of report details: December 12, 2025, IGI Report No LG757507621, ROUND BRILLIANT, 9.18 - 9.27 X 5.59 MM, 2.89 CARATS, D, VVS 2, IDEAL, 60.7%, 58%, Medium (Faceted), Pointed, EXCELLENT, EXCELLENT, NONE, IGI LG757507621

Comments: HEARTS & ARROWS This Laboratory Grown Diamond was created by Chemical Vapor Deposition (CVD) growth process. Type IIa