



ELECTRONIC COPY

LG757516265 Report verification at igi.org

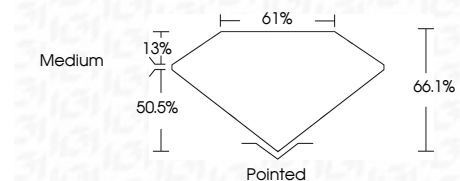


December 16, 2025 IGI Report Number LG757516265 Description LABORATORY GROWN DIAMOND Shape and Cutting Style CUT CORNERED RECTANGULAR MODIFIED BRILLIANT

Measurements 10.91 X 7.68 X 5.08 MM

GRADING RESULTS

Carat Weight 3.55 CARATS Color Grade F Clarity Grade VVS 2



ADDITIONAL GRADING INFORMATION

Polish EXCELLENT Symmetry EXCELLENT Fluorescence NONE Inscription(s) LG757516265

Comments: This Laboratory Grown Diamond was created by Chemical Vapor Deposition (CVD) growth process. Type IIa



December 16, 2025 IGI Report Number LG757516265 Description LABORATORY GROWN DIAMOND Shape and Cutting Style CUT CORNERED RECTANGULAR MODIFIED BRILLIANT Measurements 10.91 X 7.68 X 5.08 MM

GRADING RESULTS

Carat Weight 3.55 CARATS Color Grade F Clarity Grade VVS 2

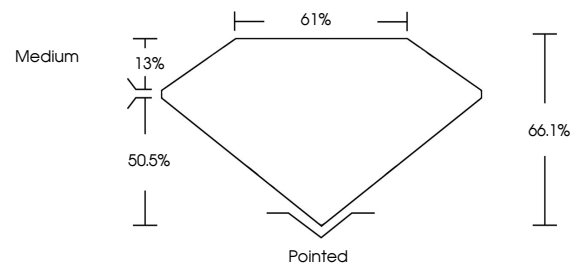
ADDITIONAL GRADING INFORMATION

Polish EXCELLENT Symmetry EXCELLENT Fluorescence NONE

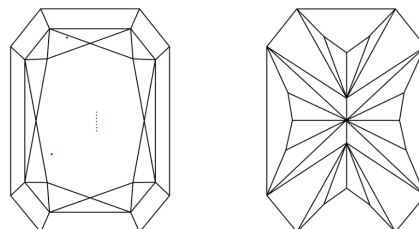
Inscription(s) LG757516265

Comments: This Laboratory Grown Diamond was created by Chemical Vapor Deposition (CVD) growth process. Type IIa

PROPORTIONS

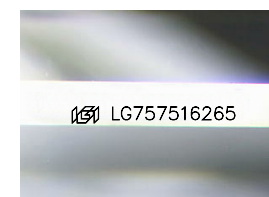


CLARITY CHARACTERISTICS



KEY TO SYMBOLS

Red symbols indicate internal characteristics. Green symbols indicate external characteristics.



Sample Image Used

COLOR

D E F G H I J Faint Very Light Light

CLARITY

FL IF VVS 1-2 VS 1-2 SI 1-2 I 1-3 Flawless Internally Flawless Very Very Slightly Included Very Slightly Included Slightly Included Included

December 16, 2025 IGI Report No. LG757516265 CUT CORNERED RECT. MODIFIED BRILLIANT 10.91 X 7.68 X 5.08 MM 3.55 CARATS F VVS 2 66.1% 61% Medium Polished EXCELLENT EXCELLENT NONE LG757516265

Comments: This Laboratory Grown Diamond was created by Chemical Vapor Deposition (CVD) growth process. Type IIa