



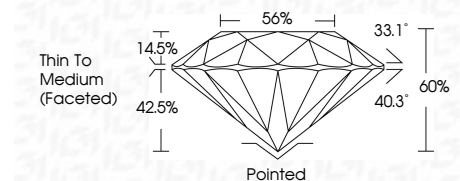
ELECTRONIC COPY

LG757518036 Report verification at igi.org



December 23, 2025 IGI Report Number LG757518036 Description LABORATORY GROWN DIAMOND Shape and Cutting Style ROUND BRILLIANT Measurements 9.17 - 9.22 X 5.50 MM

GRADING RESULTS Carat Weight 2.82 CARATS Color Grade F Clarity Grade VVS 2 Cut Grade IDEAL



ADDITIONAL GRADING INFORMATION Polish EXCELLENT Symmetry EXCELLENT Fluorescence NONE Inscription(s) IGI LG757518036 Comments: This Laboratory Grown Diamond was created by Chemical Vapor Deposition (CVD) growth process. Type IIa



December 23, 2025 IGI Report No LG757518036 ROUND BRILLIANT 9.17 - 9.22 X 5.50 MM 2.82 CARATS F VVS 2 IDEAL 60% 56% Thin To Medium (Faceted) Pointed EXCELLENT EXCELLENT NONE IGI LG757518036 Comments: This Laboratory Grown Diamond was created by Chemical Vapor Deposition (CVD) growth process. Type IIa

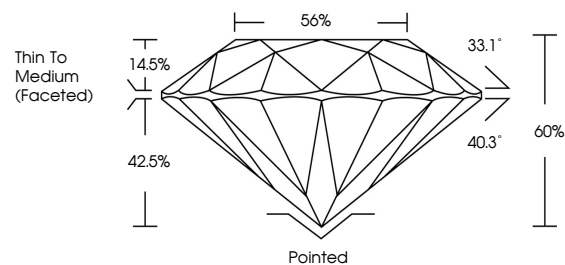
December 23, 2025 IGI Report Number LG757518036 Description LABORATORY GROWN DIAMOND Shape and Cutting Style ROUND BRILLIANT Measurements 9.17 - 9.22 X 5.50 MM

GRADING RESULTS Carat Weight 2.82 CARATS Color Grade F Clarity Grade VVS 2 Cut Grade IDEAL

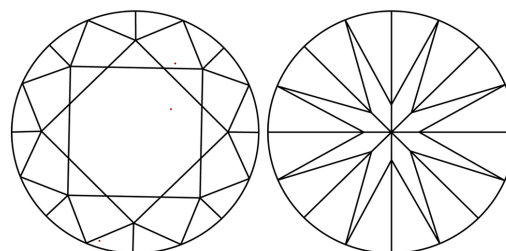
ADDITIONAL GRADING INFORMATION Polish EXCELLENT Symmetry EXCELLENT Fluorescence NONE Inscription(s) IGI LG757518036

Comments: This Laboratory Grown Diamond was created by Chemical Vapor Deposition (CVD) growth process. Type IIa

PROPORTIONS

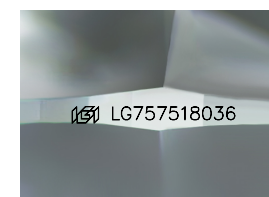


CLARITY CHARACTERISTICS



KEY TO SYMBOLS

Red symbols indicate internal characteristics. Green symbols indicate external characteristics.



Sample Image Used

COLOR

D E F G H I J Faint Very Light Light

CLARITY

FL IF VVS 1-2 VS 1-2 SI 1-2 I 1-3 Flawless Internally Flawless Very Very Slightly Included Very Slightly Included Slightly Included Included

