



ELECTRONIC COPY

LG757519551
Report verification at igi.org



December 29, 2025
IGI Report Number **LG757519551**
Description **LABORATORY GROWN DIAMOND**
Shape and Cutting Style **CUSHION MODIFIED BRILLIANT**
Measurements **8.52 X 7.13 X 4.76 MM**
GRADING RESULTS
Carat Weight **2.59 CARATS**
Color Grade **FANCY DEEP GREENISH BLUE**
Clarity Grade **VS 1**

LABORATORY GROWN DIAMOND REPORT

December 29, 2025
IGI Report Number **LG757519551**
Description **LABORATORY GROWN DIAMOND**
Shape and Cutting Style **CUSHION MODIFIED BRILLIANT**
Measurements **8.52 X 7.13 X 4.76 MM**

GRADING RESULTS

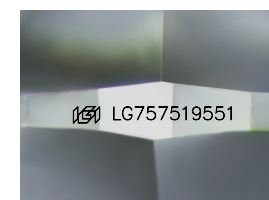
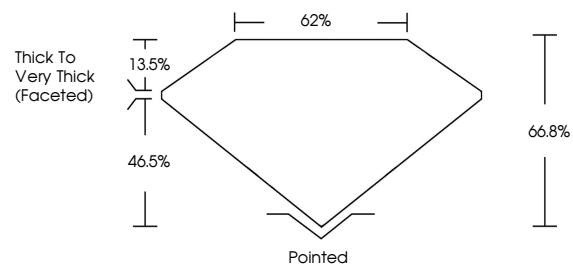
Carat Weight **2.59 CARATS**
Color Grade **FANCY DEEP GREENISH BLUE**
Clarity Grade **VS 1**

ADDITIONAL GRADING INFORMATION

Polish **EXCELLENT**
Symmetry **EXCELLENT**
Fluorescence **NONE**
Inscription(s) **IGI LG757519551**

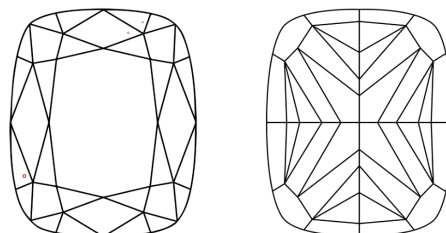
Comments: This Laboratory Grown Diamond was created by Chemical Vapor Deposition (CVD) growth process.
Indications of post-growth treatment.

PROPORTIONS



Sample Image Used

CLARITY CHARACTERISTICS



KEY TO SYMBOLS

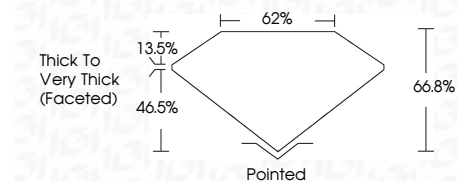
Red symbols indicate internal characteristics.
Green symbols indicate external characteristics.

COLOR

D E F G H I J Faint Very Light Light

CLARITY

FL	IF	VS ¹⁻²	VS ¹⁻²	SI ¹⁻²	I ¹⁻³
Flawless	Internally Flawless	Very Very Slightly Included	Very Slightly Included	Slightly Included	Included



ADDITIONAL GRADING INFORMATION

Polish **EXCELLENT**
Symmetry **EXCELLENT**
Fluorescence **NONE**
Inscription(s) **IGI LG757519551**
Comments: This Laboratory Grown Diamond was created by Chemical Vapor Deposition (CVD) growth process.
Indications of post-growth treatment.



December 29, 2025
IGI Report No LG757519551
CUSHION MODIFIED BRILLIANT
8.52 X 7.13 X 4.76 MM
2.59 CARATS
FANCY DEEP GREENISH BLUE
VS 1
66.8%
62%
Thick to Very Thick (Faceted)
Pointed
EXCELLENT
EXCELLENT
NONE
IGI LG757519551
Comments: This Laboratory Grown Diamond was created by Chemical Vapor Deposition (CVD) growth process.
Indications of post-growth treatment.