



ELECTRONIC COPY

LG757521533
Report verification at igi.org



December 18, 2025

IGI Report Number **LG757521533**

Description **LABORATORY GROWN DIAMOND**

Shape and Cutting Style **PRINCESS CUT**

Measurements **5.52 X 5.34 X 3.81 MM**

GRADING RESULTS

Carat Weight **1.04 CARAT**

Color Grade **FANCY VIVID BLUE**

Clarity Grade **VS 2**

December 18, 2025
IGI Report Number **LG757521533**
Description **LABORATORY GROWN DIAMOND**
Shape and Cutting Style **PRINCESS CUT**
Measurements **5.52 X 5.34 X 3.81 MM**

GRADING RESULTS

Carat Weight **1.04 CARAT**

Color Grade **FANCY VIVID BLUE**

Clarity Grade **VS 2**

ADDITIONAL GRADING INFORMATION

Polish **EXCELLENT**

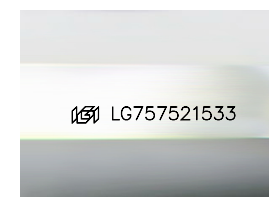
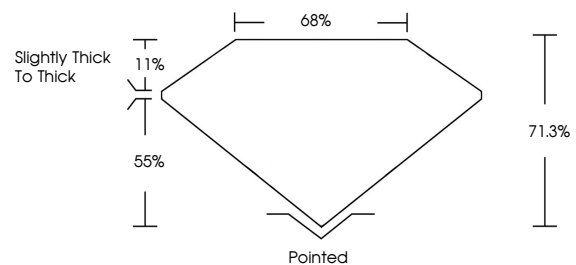
Symmetry **VERY GOOD**

Fluorescence **NONE**

Inscription(s) **IGI LG757521533**

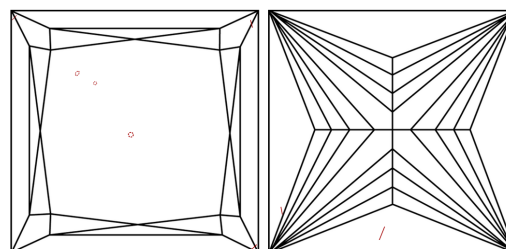
Comments: This Laboratory Grown Diamond was created by Chemical Vapor Deposition (CVD) growth process. Indications of post-growth treatment.

PROPORTIONS



Sample Image Used

CLARITY CHARACTERISTICS



KEY TO SYMBOLS

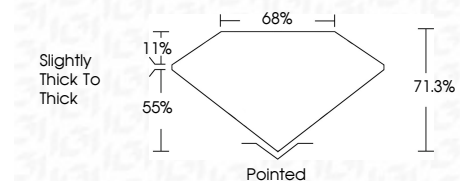
Red symbols indicate internal characteristics.
Green symbols indicate external characteristics.

COLOR

D E F G H I J Faint Very Light Light

CLARITY

FL	IF	VS ¹⁻²	VS ¹⁻²	SI ¹⁻²	I ¹⁻³
Flawless	Internally Flawless	Very Very Slightly Included	Very Slightly Included	Slightly Included	Included



ADDITIONAL GRADING INFORMATION

Polish **EXCELLENT**

Symmetry **VERY GOOD**

Fluorescence **NONE**

Inscription(s) **IGI LG757521533**

Comments: This Laboratory Grown Diamond was created by Chemical Vapor Deposition (CVD) growth process. Indications of post-growth treatment.



IGI



December 18, 2025
IGI Report No. LG757521533
PRINCESS CUT

1.04 CARAT
Carat Weight
FANCY VIVID BLUE
Color Grade

VS 2
Clarity Grade
71.0%
Depth
65%
Table
Slightly Thick To Thick
Girdle

Pointed
Culet
EXCELLENT
Polish
VERY GOOD
Symmetry
NONE
Fluorescence
Inscription(s)
IGI LG757521533

Comments: This Laboratory Grown Diamond was created by Chemical Vapor Deposition (CVD) growth process. Indications of post-growth treatment.