



**ELECTRONIC COPY**

LG757523455  
Report verification at igi.org



December 18, 2025

IGI Report Number **LG757523455**

Description **LABORATORY GROWN DIAMOND**

Shape and Cutting Style **CUT CORNERED  
RECTANGULAR MODIFIED  
BRILLIANT**

Measurements **10.23 X 7.13 X 4.82 MM**

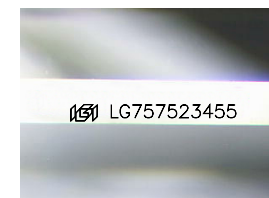
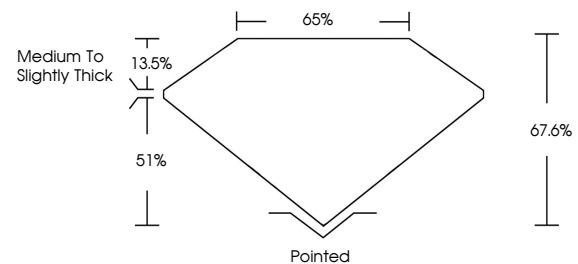
**GRADING RESULTS**

Carat Weight **3.07 CARATS**

Color Grade **H**

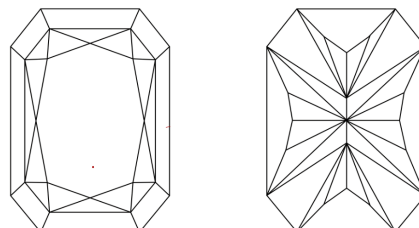
Clarity Grade **VVS 2**

**PROPORTIONS**



Sample Image Used

**CLARITY CHARACTERISTICS**



**KEY TO SYMBOLS**

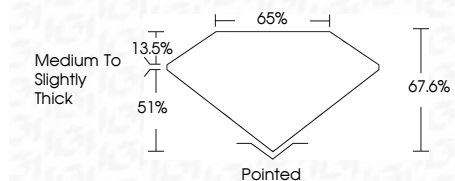
Red symbols indicate internal characteristics.  
Green symbols indicate external characteristics.

**COLOR**

D E F G H I J Faint Very Light Light

**CLARITY**

FL	IF	VVS <sup>1-2</sup>	VS <sup>1-2</sup>	SI <sup>1-2</sup>	I <sup>1-3</sup>
Flawless	Internally Flawless	Very Very Slightly Included	Very Slightly Included	Slightly Included	Included



**ADDITIONAL GRADING INFORMATION**

Polish **EXCELLENT**

Symmetry **EXCELLENT**

Fluorescence **NONE**

Inscription(s) **IGI LG757523455**

Comments: This Laboratory Grown Diamond was created by Chemical Vapor Deposition (CVD) growth process. Type IIa



**IGI**



December 18, 2025  
IGI Report No. LG757523455  
CUT CORNERED RECT. MODIFIED BRILLIANT

10.23 X 7.13 X 4.82 MM

3.07 CARATS  
H

VVS 2  
67.6%  
65%

Medium to Slightly Thick

Pointed  
EXCELLENT  
EXCELLENT  
NONE  
IGI LG757523455

Comments: This Laboratory Grown Diamond was created by Chemical Vapor Deposition (CVD) growth process. Type IIa