



ELECTRONIC COPY

LG757524236 Report verification at igi.org



December 18, 2025 IGI Report Number LG757524236 Description LABORATORY GROWN DIAMOND Shape and Cutting Style CUT CORNERED RECTANGULAR MODIFIED BRILLIANT Measurements 10.10 X 7.24 X 4.92 MM GRADING RESULTS Carat Weight 3.08 CARATS Color Grade F Clarity Grade VS 1

December 18, 2025 IGI Report Number LG757524236 Description LABORATORY GROWN DIAMOND Shape and Cutting Style CUT CORNERED RECTANGULAR MODIFIED BRILLIANT Measurements 10.10 X 7.24 X 4.92 MM

GRADING RESULTS

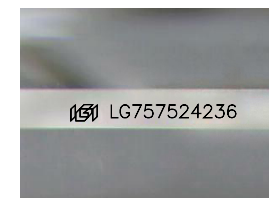
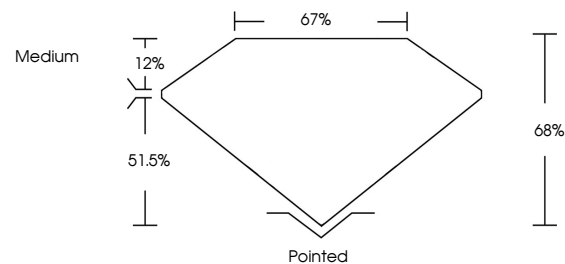
Carat Weight 3.08 CARATS Color Grade F Clarity Grade VS 1

ADDITIONAL GRADING INFORMATION

Polish EXCELLENT Symmetry EXCELLENT Fluorescence NONE Inscription(s) LG757524236

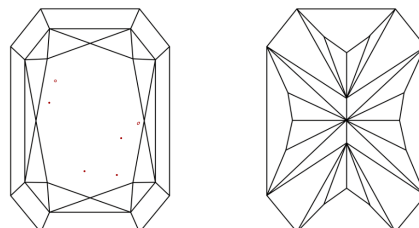
Comments: This Laboratory Grown Diamond was created by Chemical Vapor Deposition (CVD) growth process. Type IIa

PROPORTIONS



Sample Image Used

CLARITY CHARACTERISTICS



KEY TO SYMBOLS

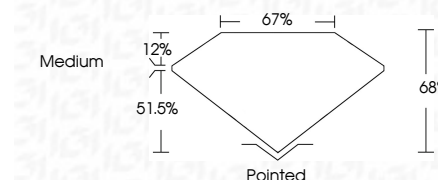
Red symbols indicate internal characteristics. Green symbols indicate external characteristics.

COLOR

D E F G H I J Faint Very Light Light

CLARITY

FL IF VS 1-2 VS 2-3 SI 1-2 I 1-3 Flawless Internally Flawless Very Very Slightly Included Very Slightly Included Slightly Included Included



ADDITIONAL GRADING INFORMATION

Polish EXCELLENT Symmetry EXCELLENT Fluorescence NONE Inscription(s) LG757524236 Comments: This Laboratory Grown Diamond was created by Chemical Vapor Deposition (CVD) growth process. Type IIa



IGI



December 18, 2025 IGI Report No LG757524236 CUT CORNERED RECT. MODIFIED BRILLIANT 10.10 X 7.24 X 4.92 MM 3.08 CARATS F VS 1 68% 67% Medium Polished EXCELLENT EXCELLENT NONE LG757524236

Comments: This Laboratory Grown Diamond was created by Chemical Vapor Deposition (CVD) growth process. Type IIa