



ELECTRONIC COPY

LG757525548
Report verification at igi.org



December 17, 2025
IGI Report Number LG757525548
Description LABORATORY GROWN DIAMOND
Shape and Cutting Style ROUND BRILLIANT
Measurements 8.67 - 8.76 X 5.43 MM
GRADING RESULTS
Carat Weight 2.52 CARATS
Color Grade D
Clarity Grade VS 1
Cut Grade IDEAL

December 17, 2025
IGI Report Number LG757525548
Description LABORATORY GROWN DIAMOND
Shape and Cutting Style ROUND BRILLIANT
Measurements 8.67 - 8.76 X 5.43 MM

GRADING RESULTS

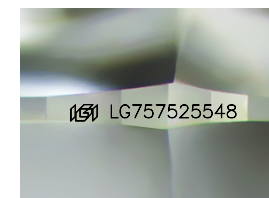
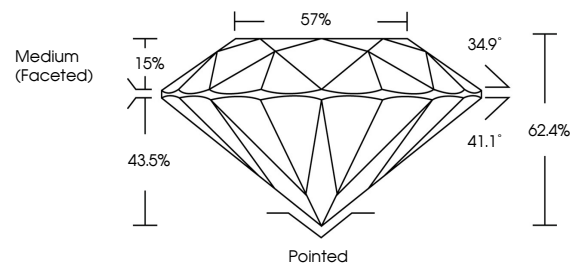
Carat Weight 2.52 CARATS
Color Grade D
Clarity Grade VS 1
Cut Grade IDEAL

ADDITIONAL GRADING INFORMATION

Polish EXCELLENT
Symmetry EXCELLENT
Fluorescence NONE
Inscription(s) LG757525548

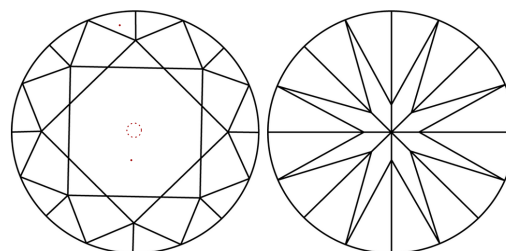
Comments: HEARTS & ARROWS
This Laboratory Grown Diamond was created by Chemical Vapor Deposition (CVD) growth process. Type IIa

PROPORTIONS



Sample Image Used

CLARITY CHARACTERISTICS



KEY TO SYMBOLS

Red symbols indicate internal characteristics.
Green symbols indicate external characteristics.

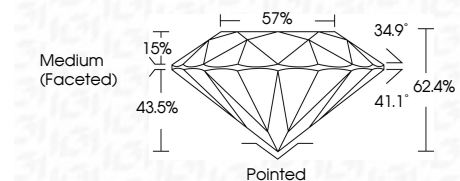


COLOR

D E F G H I J Faint Very Light Light

CLARITY

FL IF VS 1-2 VS 2-3 SI 1-2 I 1-3
Flawless Internally Flawless Very Very Slightly Included Very Slightly Included Slightly Included Included



ADDITIONAL GRADING INFORMATION

Polish EXCELLENT
Symmetry EXCELLENT
Fluorescence NONE
Inscription(s) LG757525548
Comments: HEARTS & ARROWS
This Laboratory Grown Diamond was created by Chemical Vapor Deposition (CVD) growth process. Type IIa



Summary table with fields: December 17, 2025, IGI Report No LG757525548, ROUND BRILLIANT, 8.67 - 8.76 X 5.43 MM, 2.52 CARATS, D, VS 1, IDEAL, 62.4%, 57%, Medium (Faceted), Pointed, EXCELLENT, EXCELLENT, NONE, LG757525548, Comments: HEARTS & ARROWS, This Laboratory Grown Diamond was created by Chemical Vapor Deposition (CVD) growth process. Type IIa