



ELECTRONIC COPY

LG757525704
Report verification at igi.org



December 17, 2025

IGI Report Number **LG757525704**

Description **LABORATORY GROWN DIAMOND**

Shape and Cutting Style **PEAR BRILLIANT**

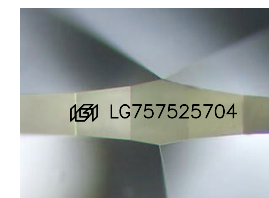
Measurements **10.44 X 6.59 X 4.11 MM**

GRADING RESULTS

Carat Weight **1.58 CARAT**

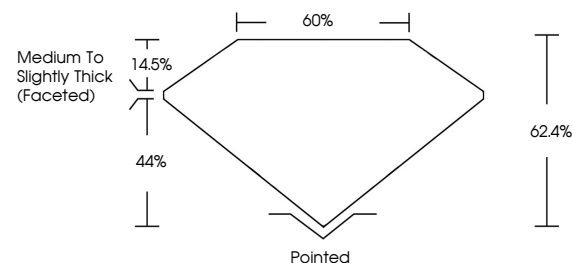
Color Grade **D**

Clarity Grade **VVS 2**

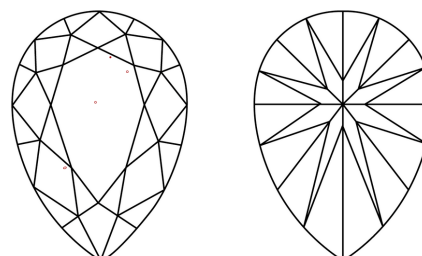


Sample Image Used

PROPORTIONS



CLARITY CHARACTERISTICS



KEY TO SYMBOLS

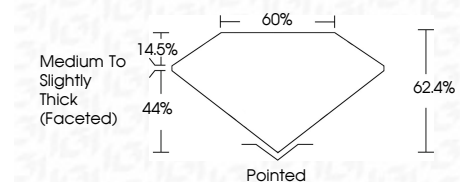
Red symbols indicate internal characteristics.
Green symbols indicate external characteristics.

COLOR

D E F G H I J Faint Very Light Light

CLARITY

FL	IF	VVS ¹⁻²	VS ¹⁻²	SI ¹⁻²	I ¹⁻³
Flawless	Internally Flawless	Very Very Slightly Included	Very Slightly Included	Slightly Included	Included



ADDITIONAL GRADING INFORMATION

Polish **EXCELLENT**

Symmetry **EXCELLENT**

Fluorescence **NONE**

Inscription(s) **IGI LG757525704**

Comments: This Laboratory Grown Diamond was created by Chemical Vapor Deposition (CVD) growth process. Type IIa



IGI



December 17, 2025	1.58 CARAT	D	VVS 2	62.4%	60%	Pointed	EXCELLENT	EXCELLENT	NONE	IGI LG757525704
IGI Report No LG757525704	Carat Weight	Color Grade	Clarity Grade	Table	Girdle	Culet	Polish	Symmetry	Fluorescence	Inscription(s)
PEAR BRILLIANT	10.44 X 6.59 X 4.11 MM	D	VVS 2	62.4%	60%	Medium to Slightly Thick (Faceted)	EXCELLENT	EXCELLENT	NONE	IGI LG757525704

Comments: This Laboratory Grown Diamond was created by Chemical Vapor Deposition (CVD) growth process. Type IIa