



ELECTRONIC COPY

LG757525714
Report verification at igi.org



December 16, 2025

IGI Report Number **LG757525714**

Description **LABORATORY GROWN DIAMOND**

Shape and Cutting Style **PEAR BRILLIANT**

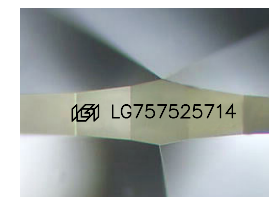
Measurements **10.38 X 7.92 X 4.66 MM**

GRADING RESULTS

Carat Weight **2.08 CARATS**

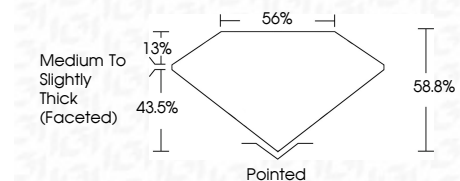
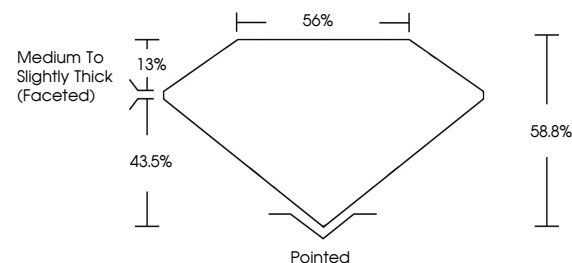
Color Grade **D**

Clarity Grade **VS 1**

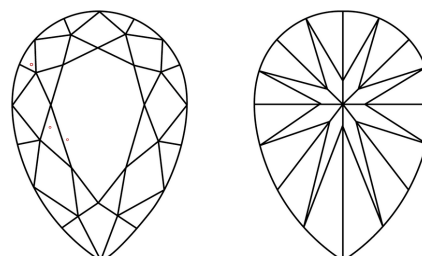


Sample Image Used

PROPORTIONS



CLARITY CHARACTERISTICS



KEY TO SYMBOLS

Red symbols indicate internal characteristics.
Green symbols indicate external characteristics.

COLOR

D E F G H I J Faint Very Light Light

CLARITY

FL	IF	VS ¹⁻²	VS ¹⁻²	SI ¹⁻²	I ¹⁻³
Flawless	Internally Flawless	Very Very Slightly Included	Very Slightly Included	Slightly Included	Included

ADDITIONAL GRADING INFORMATION

Polish **EXCELLENT**

Symmetry **EXCELLENT**

Fluorescence **NONE**

Inscription(s) **IGI LG757525714**

Comments: This Laboratory Grown Diamond was created by Chemical Vapor Deposition (CVD) growth process. Type IIa



IGI



December 16, 2025
IGI Report No LG757525714
PEAR BRILLIANT

2.08 CARATS
D

10.38 X 7.92 X 4.66 MM

Carat Weight
Color Grade
Clarity Grade
Table
Depth
Girdle

2.08 CARATS
D
VS 1
58.8%
43.5%
13%

Medium to Slightly Thick (Faceted)

Pointed
EXCELLENT
EXCELLENT
NONE
IGI LG757525714

Culet
Polish
Symmetry
Fluorescence
Inscription(s)

Comments: This Laboratory Grown Diamond was created by Chemical Vapor Deposition (CVD) growth process. Type IIa