



ELECTRONIC COPY

LG757526007
Report verification at igi.org



December 15, 2025

IGI Report Number **LG757526007**

Description **LABORATORY GROWN DIAMOND**

Shape and Cutting Style **EMERALD CUT**

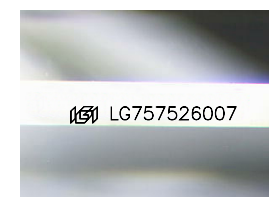
Measurements **10.88 X 6.95 X 4.99 MM**

GRADING RESULTS

Carat Weight **4.05 CARATS**

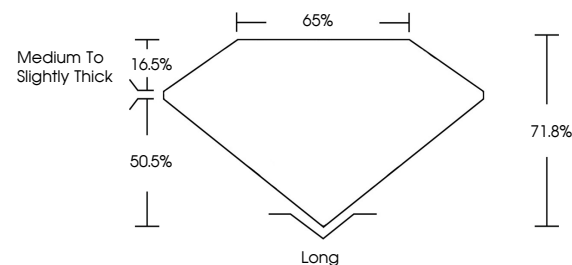
Color Grade **F**

Clarity Grade **VVS 1**

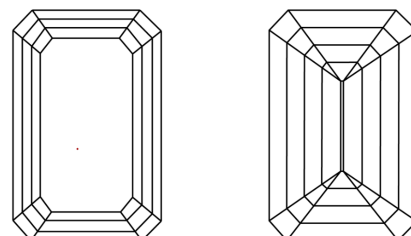


Sample Image Used

PROPORTIONS



CLARITY CHARACTERISTICS



KEY TO SYMBOLS

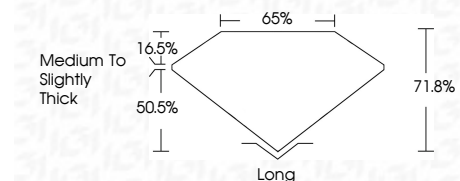
Red symbols indicate internal characteristics.
Green symbols indicate external characteristics.

COLOR

D E F G H I J Faint Very Light Light

CLARITY

FL	IF	VVS ¹⁻²	VS ¹⁻²	SI ¹⁻²	I ¹⁻³
Flawless	Internally Flawless	Very Very Slightly Included	Very Slightly Included	Slightly Included	Included



ADDITIONAL GRADING INFORMATION

Polish **EXCELLENT**

Symmetry **EXCELLENT**

Fluorescence **NONE**

Inscription(s) **IGI LG757526007**

Comments: This Laboratory Grown Diamond was created by Chemical Vapor Deposition (CVD) growth process. Type IIa



December 15, 2025
IGI Report No LG757526007
EMERALD CUT

4.05 CARATS
F

10.88 X 6.95 X 4.99 MM

Carat Weight
Color Grade
Clarity Grade
Depth
Table
Girdle
Medium to Slightly Thick

VS 1
71.8%
65%

Long
EXCELLENT
EXCELLENT
NONE
IGI LG757526007

Culet
Polish
Symmetry
Fluorescence
Inscription(s)

Comments: This Laboratory Grown Diamond was created by Chemical Vapor Deposition (CVD) growth process. Type IIa