



ELECTRONIC COPY

LG757526629
Report verification at igi.org



December 22, 2025

IGI Report Number **LG757526629**

Description **LABORATORY GROWN DIAMOND**

Shape and Cutting Style **CUT CORNERED
RECTANGULAR MODIFIED
BRILLIANT**

Measurements **7.66 X 5.16 X 3.29 MM**

GRADING RESULTS

Carat Weight **1.12 CARAT**

Color Grade **FANCY INTENSE PINK**

Clarity Grade **VS 1**

December 22, 2025

IGI Report Number **LG757526629**

Description **LABORATORY GROWN DIAMOND**

Shape and Cutting Style **CUT CORNERED RECTANGULAR
MODIFIED BRILLIANT**

Measurements **7.66 X 5.16 X 3.29 MM**

GRADING RESULTS

Carat Weight **1.12 CARAT**

Color Grade **FANCY INTENSE PINK**

Clarity Grade **VS 1**

ADDITIONAL GRADING INFORMATION

Polish **EXCELLENT**

Symmetry **EXCELLENT**

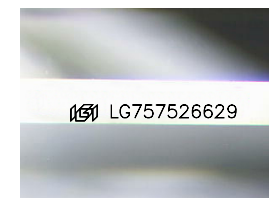
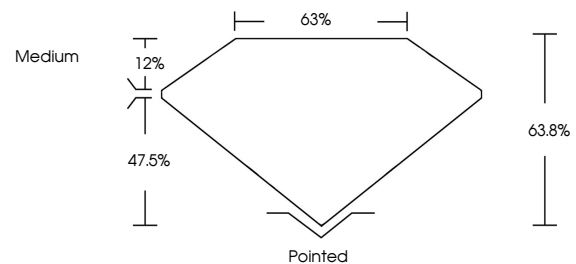
Fluorescence **SLIGHT**

Inscription(s) **IGI LG757526629**

Comments: This Laboratory Grown Diamond was created by Chemical Vapor Deposition (CVD) growth process.

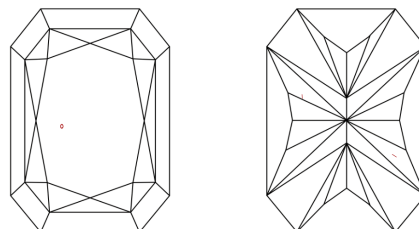
Indications of post-growth treatment.

PROPORTIONS



Sample Image Used

CLARITY CHARACTERISTICS



KEY TO SYMBOLS

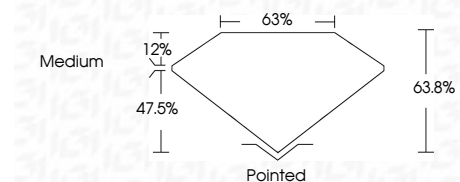
Red symbols indicate internal characteristics.
Green symbols indicate external characteristics.

COLOR

D E F G H I J Faint Very Light Light

CLARITY

FL	IF	VS ¹⁻²	VS ¹⁻²	SI ¹⁻²	I ¹⁻³
Flawless	Internally Flawless	Very Very Slightly Included	Very Slightly Included	Slightly Included	Included



ADDITIONAL GRADING INFORMATION

Polish **EXCELLENT**

Symmetry **EXCELLENT**

Fluorescence **SLIGHT**

Inscription(s) **IGI LG757526629**

Comments: This Laboratory Grown Diamond was created by Chemical Vapor Deposition (CVD) growth process. Indications of post-growth treatment.



IGI



December 22, 2025
IGI Report No LG757526629
CUT CORNERED RECT. MODIFIED BRILLIANT
7.66 X 5.16 X 3.29 MM
1.12 CARAT
FANCY INTENSE PINK
VS 1
63.8%
47.5%
Medium
Pointed
EXCELLENT
EXCELLENT
SLIGHT
IGI LG757526629

Comments: This Laboratory Grown Diamond was created by Chemical Vapor Deposition (CVD) growth process. Indications of post-growth treatment.