



ELECTRONIC COPY

LG757536487
Report verification at igi.org



December 18, 2025

IGI Report Number **LG757536487**

Description **LABORATORY GROWN DIAMOND**

Shape and Cutting Style **ROUND BRILLIANT**

Measurements **8.69 - 8.71 X 5.23 MM**

GRADING RESULTS

Carat Weight **2.39 CARATS**

Color Grade **E**

Clarity Grade **VS 1**

Cut Grade **IDEAL**

December 18, 2025
IGI Report Number **LG757536487**
Description **LABORATORY GROWN DIAMOND**
Shape and Cutting Style **ROUND BRILLIANT**
Measurements **8.69 - 8.71 X 5.23 MM**

GRADING RESULTS

Carat Weight **2.39 CARATS**

Color Grade **E**

Clarity Grade **VS 1**

Cut Grade **IDEAL**

ADDITIONAL GRADING INFORMATION

Polish **EXCELLENT**

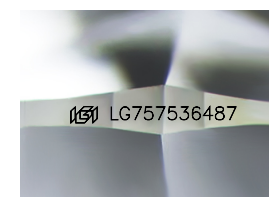
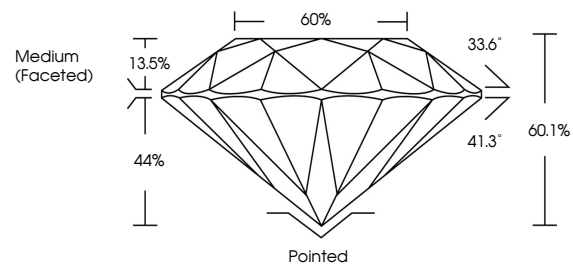
Symmetry **EXCELLENT**

Fluorescence **NONE**

Inscription(s) **IGI LG757536487**

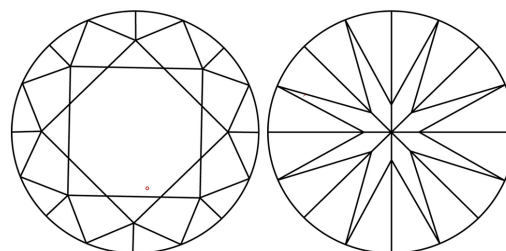
Comments: This Laboratory Grown Diamond was created by Chemical Vapor Deposition (CVD) growth process.
Type IIa

PROPORTIONS



Sample Image Used

CLARITY CHARACTERISTICS



KEY TO SYMBOLS

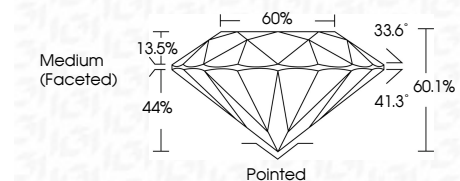
Red symbols indicate internal characteristics.
Green symbols indicate external characteristics.

COLOR

D E F G H I J Faint Very Light Light

CLARITY

FL	IF	VS ¹⁻²	VS ¹⁻²	SI ¹⁻²	I ¹⁻³
Flawless	Internally Flawless	Very Very Slightly Included	Very Slightly Included	Slightly Included	Included



ADDITIONAL GRADING INFORMATION

Polish **EXCELLENT**

Symmetry **EXCELLENT**

Fluorescence **NONE**

Inscription(s) **IGI LG757536487**

Comments: This Laboratory Grown Diamond was created by Chemical Vapor Deposition (CVD) growth process.
Type IIa



December 18, 2025
IGI Report No LG757536487
ROUND BRILLIANT

8.69 - 8.71 X 5.23 MM

Carat Weight **2.39 CARATS**

Color Grade **E**

Clarity Grade **VS 1**

Cut Grade **IDEAL**

Depth **60.1%**

Table **60%**

Girdle **Medium (Faceted)**

Culet **Pointed**

Polish **EXCELLENT**

Symmetry **EXCELLENT**

Fluorescence **NONE**

Inscription(s) **IGI LG757536487**

Comments: This Laboratory Grown Diamond was created by Chemical Vapor Deposition (CVD) growth process.
Type IIa