



ELECTRONIC COPY

LG757541251
Report verification at igi.org



January 6, 2026
IGI Report Number **LG757541251**
Description **LABORATORY GROWN DIAMOND**
Shape and Cutting Style **CUSHION MODIFIED BRILLIANT**
Measurements **14.53 X 12.01 X 7.93 MM**
GRADING RESULTS
Carat Weight **12.40 CARATS**
Color Grade **FANCY VIVID REDDISH ORANGE**
Clarity Grade **VS 2**

LABORATORY GROWN DIAMOND REPORT

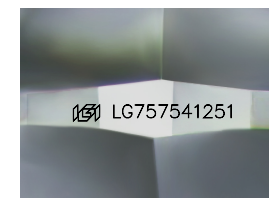
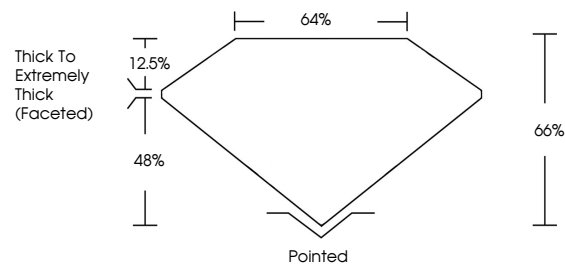
January 6, 2026
IGI Report Number **LG757541251**
Description **LABORATORY GROWN DIAMOND**
Shape and Cutting Style **CUSHION MODIFIED BRILLIANT**
Measurements **14.53 X 12.01 X 7.93 MM**
GRADING RESULTS
Carat Weight **12.40 CARATS**
Color Grade **FANCY VIVID REDDISH ORANGE**
Clarity Grade **VS 2**

ADDITIONAL GRADING INFORMATION

Polish **EXCELLENT**
Symmetry **EXCELLENT**
Fluorescence **SLIGHT**
Inscription(s) **IGI LG757541251**

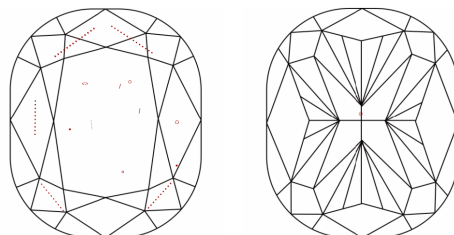
Comments: This Laboratory Grown Diamond was created by Chemical Vapor Deposition (CVD) growth process. Indications of post-growth treatment.

PROPORTIONS



Sample Image Used

CLARITY CHARACTERISTICS



KEY TO SYMBOLS

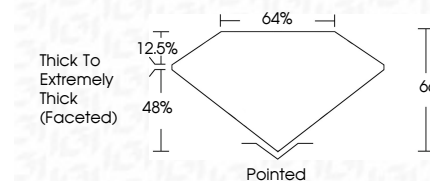
Red symbols indicate internal characteristics.
Green symbols indicate external characteristics.

COLOR

D E F G H I J Faint Very Light Light

CLARITY

FL	IF	VS ¹⁻²	VS ¹⁻²	SI ¹⁻²	I ¹⁻³
Flawless	Internally Flawless	Very Very Slightly Included	Very Slightly Included	Slightly Included	Included



ADDITIONAL GRADING INFORMATION

Polish **EXCELLENT**
Symmetry **EXCELLENT**
Fluorescence **SLIGHT**
Inscription(s) **IGI LG757541251**
Comments: This Laboratory Grown Diamond was created by Chemical Vapor Deposition (CVD) growth process. Indications of post-growth treatment.



January 6, 2026
IGI Report No LG757541251
CUSHION MODIFIED BRILLIANT
12.40 CARATS
Carat Weight
Color Grade FANCY VIVID REDDISH ORANGE
Clarity Grade VS 2
Depth 66%
Table 48%
Girdle Thick To Extremely Thick (Faceted)
Culet Pointed
Polish EXCELLENT
Symmetry EXCELLENT
Fluorescence SLIGHT
Inscription(s) IGI LG757541251
Comments: This Laboratory Grown Diamond was created by Chemical Vapor Deposition (CVD) growth process. Indications of post-growth treatment.