



**ELECTRONIC COPY**

LG758503739  
Report verification at igi.org



January 15, 2026

IGI Report Number **LG758503739**

Description **LABORATORY GROWN DIAMOND**

Shape and Cutting Style **ROUND BRILLIANT**

Measurements **10.41 - 10.46 X 6.30 MM**

**GRADING RESULTS**

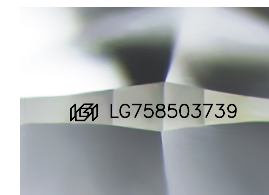
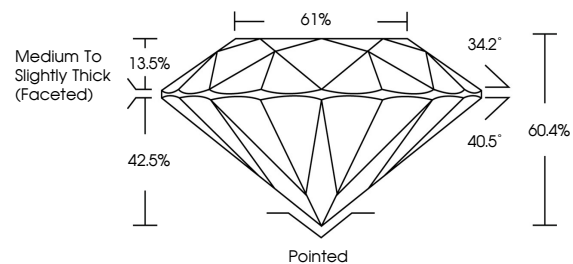
Carat Weight **4.32 CARATS**

Color Grade **F**

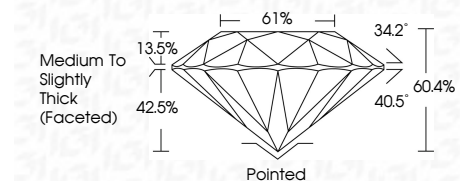
Clarity Grade **VS 1**

Cut Grade **EXCELLENT**

**PROPORTIONS**



Sample Image Used



**ADDITIONAL GRADING INFORMATION**

Polish **EXCELLENT**

Symmetry **EXCELLENT**

Fluorescence **NONE**

Inscription(s) **IGI LG758503739**

Comments: This Laboratory Grown Diamond was created by Chemical Vapor Deposition (CVD) growth process. Type IIa



**COLOR**

D E F G H I J Faint Very Light Light

**CLARITY**

FL	IF	VS <sup>1-2</sup>	VS <sup>1-2</sup>	SI <sup>1-2</sup>	I <sup>1-3</sup>
Flawless	Internally Flawless	Very Very Slightly Included	Very Slightly Included	Slightly Included	Included



January 15, 2026  
IGI Report No LG758503739  
ROUND BRILLIANT

10.41 - 10.46 X 6.30 MM

4.32 CARATS  
F

Color Grade  
VS 1

Clarity Grade  
EXCELLENT

Depth  
60.4%

Table  
61%

Girdle  
Medium To Slightly Thick (Faceted)

Culet  
Pointed

Polish  
EXCELLENT

Symmetry  
EXCELLENT

Fluorescence  
NONE

Inscription(s)  
IGI LG758503739

Comments:  
This Laboratory Grown Diamond was created by Chemical Vapor Deposition (CVD) growth process.  
Type IIa