



ELECTRONIC COPY

LG758508796
Report verification at igi.org



December 17, 2025

IGI Report Number **LG758508796**

Description **LABORATORY GROWN DIAMOND**

Shape and Cutting Style **ROUND BRILLIANT**

Measurements **9.67 - 9.70 X 5.83 MM**

GRADING RESULTS

Carat Weight **3.32 CARATS**

Color Grade **D**

Clarity Grade **VVS 2**

Cut Grade **IDEAL**

December 17, 2025

IGI Report Number **LG758508796**

Description **LABORATORY GROWN DIAMOND**

Shape and Cutting Style **ROUND BRILLIANT**

Measurements **9.67 - 9.70 X 5.83 MM**

GRADING RESULTS

Carat Weight **3.32 CARATS**

Color Grade **D**

Clarity Grade **VVS 2**

Cut Grade **IDEAL**

ADDITIONAL GRADING INFORMATION

Polish **EXCELLENT**

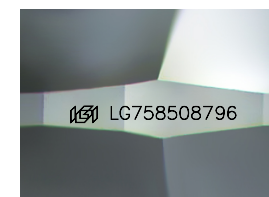
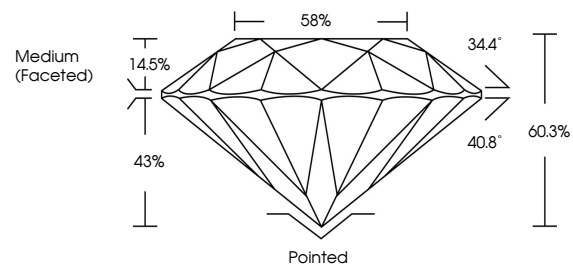
Symmetry **EXCELLENT**

Fluorescence **NONE**

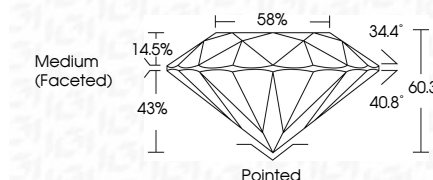
Inscription(s) **LG758508796**

Comments: This Laboratory Grown Diamond was created by Chemical Vapor Deposition (CVD) growth process. Type IIa

PROPORTIONS



Sample Image Used



COLOR

D E F G H I J Faint Very Light Light

CLARITY

FL	IF	VS ¹⁻²	VS ¹⁻²	SI ¹⁻²	I ¹⁻³
Flawless	Internally Flawless	Very Very Slightly Included	Very Slightly Included	Slightly Included	Included

ADDITIONAL GRADING INFORMATION

Polish **EXCELLENT**

Symmetry **EXCELLENT**

Fluorescence **NONE**

Inscription(s) **LG758508796**

Comments: This Laboratory Grown Diamond was created by Chemical Vapor Deposition (CVD) growth process. Type IIa



IGI



December 17, 2025	IGI Report No LG758508796	3.32 CARATS	D	Pointed
ROUND BRILLIANT	9.67 - 9.70 X 5.83 MM	VVS 2	IDEAL	EXCELLENT
Carat Weight	Color Grade	Clarity Grade	Depth	Symmetry
3.32 CARATS	D	VVS 2	60.3%	EXCELLENT
Color Grade	Clarity Grade	Cut Grade	Table	Fluorescence
D	VVS 2	IDEAL	14.5%	NONE
Clarity Grade	Depth	Cut Grade	43%	Inscription(s)
VVS 2	60.3%	IDEAL	40.8°	LG758508796
Depth	Table	Cut Grade	34.4°	
60.3%	14.5%	IDEAL	40.8°	
Table	Girdle	Medium (Faceted)	60.3%	
14.5%	Medium (Faceted)			
43%	Pointed			
40.8°	EXCELLENT			
60.3%	EXCELLENT			
	NONE			
	Inscription(s)			
	LG758508796			

Comments: This Laboratory Grown Diamond was created by Chemical Vapor Deposition (CVD) growth process. Type IIa