



**INTERNATIONAL
GEMOLOGICAL
INSTITUTE**

ELECTRONIC COPY



December 24, 2025

IGI Report Number **LG758510687**

PEAR BRILLIANT

LABORATORY GROWN DIAMOND

5.38 X 3.24 X 2.05 MM

Carat Weight **0.21 CARAT**

Color Grade **FANCY INTENSE PINK**

Clarity Grade **SI 1**

Polish **VERY GOOD**

Symmetry **VERY GOOD**

Fluorescence **SLIGHT**

Inscription(s) **IGI LG758510687**

Comments: This Laboratory Grown Diamond was created by Chemical Vapor Deposition (CVD) growth process. Indications of post-growth treatment.

LABORATORY GROWN DIAMOND REPORT

December 24, 2025

IGI Report Number **LG758510687**

Description **LABORATORY GROWN DIAMOND**

Shape and Cutting Style **PEAR BRILLIANT**

Measurements **5.38 X 3.24 X 2.05 MM**

GRADING RESULTS

Carat Weight **0.21 CARAT**

Color Grade **FANCY INTENSE PINK**

Clarity Grade **SI 1**

ADDITIONAL GRADING INFORMATION

Polish **VERY GOOD**

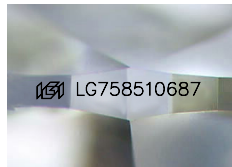
Symmetry **VERY GOOD**

Fluorescence **SLIGHT**

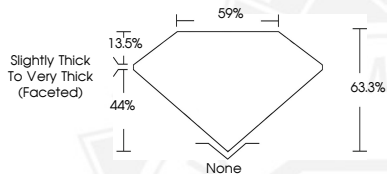
Inscription(s) **IGI LG758510687**

Comments: This Laboratory Grown Diamond was created by Chemical Vapor Deposition (CVD) growth process.

Indications of post-growth treatment.



Sample Image Used



December 24, 2025

IGI Report Number **LG758510687**

PEAR BRILLIANT

LABORATORY GROWN DIAMOND

5.38 X 3.24 X 2.05 MM

Carat Weight **0.21 CARAT**

Color Grade **FANCY INTENSE PINK**

Clarity Grade **SI 1**

Polish **VERY GOOD**

Symmetry **VERY GOOD**

Fluorescence **SLIGHT**

Inscription(s) **IGI LG758510687**

Comments: This Laboratory Grown Diamond was created by Chemical Vapor Deposition (CVD) growth process. Indications of post-growth treatment.



THIS DOCUMENT WAS PRODUCED WITH THE FOLLOWING SECURITY MEASURES: SPECIAL DOCUMENT PAPER, INK SCREENS, WATERMARK, BACKGROUND DESIGNS, HOLOGRAM AND OTHER SECURITY FEATURES NOT LISTED AND DO EXCEED DOCUMENT SECURITY INDUSTRY GUIDELINES.

For terms & conditions and to verify this report, please visit www.igi.org