



December 24, 2025

IGI Report Number LG758510895
CUT CORNERED SQUARE
MODIFIED BRILLIANT
LABORATORY GROWN DIAMOND
3.30 X 3.26 X 2.20 MM

LABORATORY GROWN DIAMOND REPORT

December 24, 2025

IGI Report Number **LG758510895**

Description **LABORATORY GROWN DIAMOND**

Shape and Cutting Style **CUT CORNERED SQUARE MODIFIED
BRILLIANT**

Measurements **3.30 X 3.26 X 2.20 MM**

GRADING RESULTS

Carat Weight **0.20 CARAT**

Color Grade **FANCY VIVID PINK**

Clarity Grade **VS 2**

ADDITIONAL GRADING INFORMATION

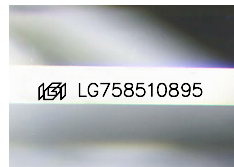
Polish **VERY GOOD**

Symmetry **VERY GOOD**

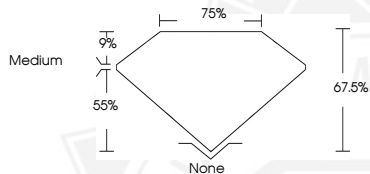
Fluorescence **SLIGHT**

Inscription(s) **IGI LG758510895**

Comments: This Laboratory Grown Diamond was created by
Chemical Vapor Deposition (CVD) growth process.
Indications of post-growth treatment.



Sample Image Used



December 24, 2025

IGI Report Number LG758510895
CUT CORNERED SQUARE MODIFIED
BRILLIANT
LABORATORY GROWN DIAMOND
3.30 X 3.26 X 2.20 MM

Carat Weight **0.20 CARAT**
Color Grade **FANCY VIVID PINK**
Clarity Grade **VS 2**
Polish **VERY GOOD**
Symmetry **VERY GOOD**
Fluorescence **SLIGHT**
Inscription(s) **IGI LG758510895**

Comments: This Laboratory Grown Diamond was created by
Chemical Vapor Deposition (CVD) growth process. Indications of
post-growth treatment.



THIS DOCUMENT WAS PRODUCED WITH THE FOLLOWING SECURITY MEASURES: SPECIAL DOCUMENT PAPER, INK SCREENS, WATERMARK, BACKGROUND DESIGNS, HOLOGRAM AND OTHER SECURITY FEATURES NOT LISTED AND DO EXCEED DOCUMENT SECURITY INDUSTRY GUIDELINES.