



LABORATORY GROWN DIAMOND REPORT

December 20, 2025
 IGI Report Number **LG758511980**
 Description **LABORATORY GROWN DIAMOND**
 Shape and Cutting Style **HEART BRILLIANT**
 Measurements **3.79 X 4.12 X 2.54 MM**

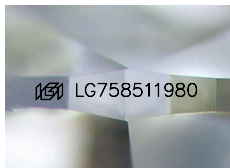
GRADING RESULTS

Carat Weight **0.21 CARAT**
 Color Grade **FANCY VIVID PINK**
 Clarity Grade **SI 1**

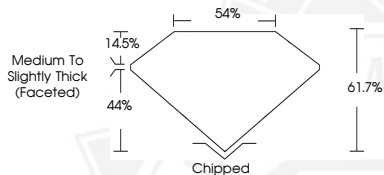
ADDITIONAL GRADING INFORMATION

Polish **GOOD**
 Symmetry **VERY GOOD**
 Fluorescence **STRONG**
 Inscription(s) **IGI LG758511980**

Comments: This Laboratory Grown Diamond was created by Chemical Vapor Deposition (CVD) growth process. Indications of post-growth treatment.



Sample Image Used



December 20, 2025
 IGI Report Number **LG758511980**
HEART BRILLIANT
LABORATORY GROWN DIAMOND
3.79 X 4.12 X 2.54 MM
 Carat Weight **0.21 CARAT**
 Color Grade **FANCY VIVID PINK**
 Clarity Grade **SI 1**
 Polish **GOOD**
 Symmetry **VERY GOOD**
 Fluorescence **STRONG**
 Inscription(s) **IGI LG758511980**

Comments: This Laboratory Grown Diamond was created by Chemical Vapor Deposition (CVD) growth process. Indications of post-growth treatment.



December 20, 2025
 IGI Report Number **LG758511980**
HEART BRILLIANT
LABORATORY GROWN DIAMOND
3.79 X 4.12 X 2.54 MM
 Carat Weight **0.21 CARAT**
 Color Grade **FANCY VIVID PINK**
 Clarity Grade **SI 1**
 Polish **GOOD**
 Symmetry **VERY GOOD**
 Fluorescence **STRONG**
 Inscription(s) **IGI LG758511980**

Comments: This Laboratory Grown Diamond was created by Chemical Vapor Deposition (CVD) growth process. Indications of post-growth treatment.



THIS DOCUMENT WAS PRODUCED WITH THE FOLLOWING SECURITY MEASURES: SPECIAL DOCUMENT PAPER, INK SCREENS, WATERMARK, BACKGROUND DESIGNS, HOLOGRAM AND OTHER SECURITY FEATURES NOT LISTED AND DO EXCEED DOCUMENT SECURITY INDUSTRY GUIDELINES.