



ELECTRONIC COPY

LG758524217
Report verification at igi.org



December 18, 2025

IGI Report Number LG758524217

Description LABORATORY GROWN DIAMOND

Shape and Cutting Style CUT CORNERED RECTANGULAR MODIFIED BRILLIANT

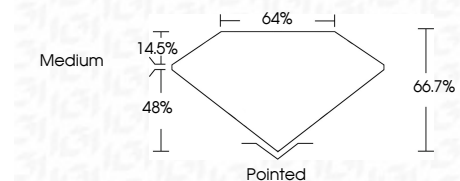
Measurements 10.07 X 7.26 X 4.84 MM

GRADING RESULTS

Carat Weight 3.08 CARATS

Color Grade F

Clarity Grade VVS 2



ADDITIONAL GRADING INFORMATION

Polish EXCELLENT

Symmetry EXCELLENT

Fluorescence NONE

Inscription(s) IGI LG758524217

Comments: This Laboratory Grown Diamond was created by Chemical Vapor Deposition (CVD) growth process. Type IIa



Summary table containing report details: Date (December 18, 2025), Report No (IGI Report No LG758524217), Description (CUT CORNERED RECT. MODIFIED BRILLIANT), Carat Weight (3.08 CARATS), Color Grade (F), Clarity Grade (VVS 2), Depth (66.7%), Table (48%), Girdle (Medium), Culet (Pointed), Polish (EXCELLENT), Symmetry (EXCELLENT), Fluorescence (NONE), and Inscription(s) (IGI LG758524217). Includes a comment about the CVD growth process.

December 18, 2025
IGI Report Number LG758524217
Description LABORATORY GROWN DIAMOND
Shape and Cutting Style CUT CORNERED RECTANGULAR MODIFIED BRILLIANT
Measurements 10.07 X 7.26 X 4.84 MM

GRADING RESULTS

Carat Weight 3.08 CARATS

Color Grade F

Clarity Grade VVS 2

ADDITIONAL GRADING INFORMATION

Polish EXCELLENT

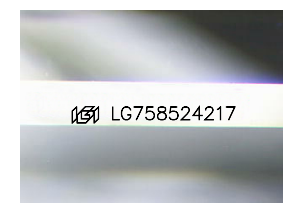
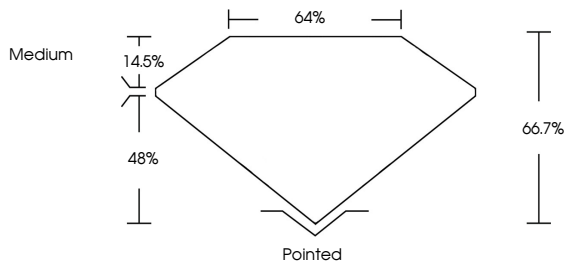
Symmetry EXCELLENT

Fluorescence NONE

Inscription(s) IGI LG758524217

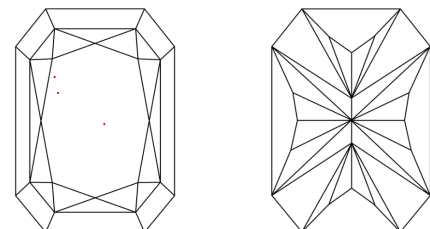
Comments: This Laboratory Grown Diamond was created by Chemical Vapor Deposition (CVD) growth process. Type IIa

PROPORTIONS



Sample Image Used

CLARITY CHARACTERISTICS



KEY TO SYMBOLS

Red symbols indicate internal characteristics. Green symbols indicate external characteristics.

COLOR

Color scale table with categories: D, E, F, G, H, I, J, Faint, Very Light, Light.

CLARITY

Clarity scale table with categories: FL, IF, VVS 1-2, VS 1-2, SI 1-2, I 1-3, Flawless, Internally Flawless, Very Very Slightly Included, Very Slightly Included, Slightly Included, Included.

