



ELECTRONIC COPY

LABORATORY GROWN DIAMOND REPORT

December 18, 2025
 IGI Report Number **LG758526151**
 Description **LABORATORY GROWN DIAMOND**
 Shape and Cutting Style **ROUND BRILLIANT**
 Measurements **8.78 - 8.82 X 5.34 MM**

GRADING RESULTS

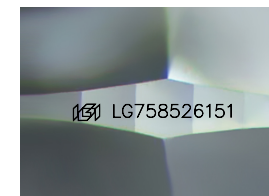
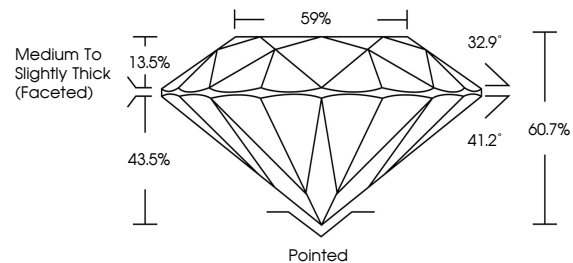
Carat Weight **2.52 CARATS**
 Color Grade **E**
 Clarity Grade **VS 1**
 Cut Grade **IDEAL**

ADDITIONAL GRADING INFORMATION

Polish **EXCELLENT**
 Symmetry **EXCELLENT**
 Fluorescence **NONE**
 Inscription(s) **IGI LG758526151**

Comments: This Laboratory Grown Diamond was created by Chemical Vapor Deposition (CVD) growth process. Type IIa

PROPORTIONS



Sample Image Used

COLOR

D E F G H I J Faint Very Light Light

CLARITY

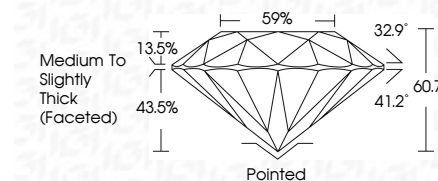
FL	IF	VS ¹⁻²	VS ¹⁻²	SI ¹⁻²	I ¹⁻³
Flawless	Internally Flawless	Very Very Slightly Included	Very Slightly Included	Slightly Included	Included



December 18, 2025
 IGI Report Number **LG758526151**
 Description **LABORATORY GROWN DIAMOND**
 Shape and Cutting Style **ROUND BRILLIANT**
 Measurements **8.78 - 8.82 X 5.34 MM**

GRADING RESULTS

Carat Weight **2.52 CARATS**
 Color Grade **E**
 Clarity Grade **VS 1**
 Cut Grade **IDEAL**



ADDITIONAL GRADING INFORMATION

Polish **EXCELLENT**
 Symmetry **EXCELLENT**
 Fluorescence **NONE**
 Inscription(s) **IGI LG758526151**

Comments: This Laboratory Grown Diamond was created by Chemical Vapor Deposition (CVD) growth process. Type IIa



December 18, 2025
 IGI Report No LG758526151
ROUND BRILLIANT
 8.78 - 8.82 X 5.34 MM
 2.52 CARATS
 E
 VS 1
 IDEAL
 60.7%
 59%
 Medium To Slightly Thick (Faceted)
 Pointed
 EXCELLENT
 EXCELLENT
 NONE
 IGI LG758526151

Comments: This Laboratory Grown Diamond was created by Chemical Vapor Deposition (CVD) growth process. Type IIa