



January 7, 2026

IGI Report Number LG758529825
**CUT CORNERED RECTANGULAR
MODIFIED BRILLIANT
LABORATORY GROWN DIAMOND**
5.74 X 3.97 X 2.56 MM

Carat Weight 0.50 CARAT
Color Grade D
Clarity Grade VVS 2
Polish EXCELLENT
Symmetry EXCELLENT
Fluorescence NONE
Inscription(s) IGI LG758529825

Comments: As Grown - No indication of post-growth treatment. This Laboratory Grown Diamond was created by High Pressure High Temperature (HPHT) growth process. Type II

LABORATORY GROWN DIAMOND REPORT

January 7, 2026
IGI Report Number **LG758529825**
Description **LABORATORY GROWN DIAMOND**
Shape and Cutting Style **CUT CORNERED RECTANGULAR MODIFIED
BRILLIANT**
Measurements **5.74 X 3.97 X 2.56 MM**

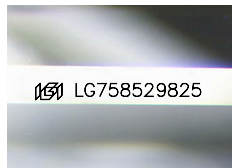
GRADING RESULTS

Carat Weight 0.50 CARAT
Color Grade D
Clarity Grade VVS 2

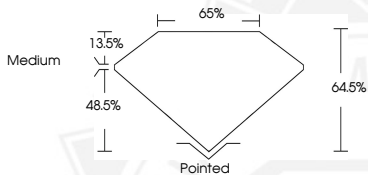
ADDITIONAL GRADING INFORMATION

Polish EXCELLENT
Symmetry EXCELLENT
Fluorescence NONE
Inscription(s) IGI LG758529825

Comments: As Grown - No indication of post-growth treatment. This Laboratory Grown Diamond was created by High Pressure High Temperature (HPHT) growth process. Type II



Sample Image Used



January 7, 2026

IGI Report Number LG758529825
**CUT CORNERED RECTANGULAR
MODIFIED BRILLIANT
LABORATORY GROWN DIAMOND**
5.74 X 3.97 X 2.56 MM

Carat Weight 0.50 CARAT
Color Grade D
Clarity Grade VVS 2
Polish EXCELLENT
Symmetry EXCELLENT
Fluorescence NONE
Inscription(s) IGI LG758529825

Comments: As Grown - No indication of post-growth treatment. This Laboratory Grown Diamond was created by High Pressure High Temperature (HPHT) growth process. Type II



THIS DOCUMENT WAS PRODUCED WITH THE FOLLOWING SECURITY MEASURES: SPECIAL DOCUMENT PAPER, INK SCREENS, WATERMARK, BACKGROUND DESIGNS, HOLOGRAM AND OTHER SECURITY FEATURES NOT LISTED AND DO EXCEED DOCUMENT SECURITY INDUSTRY GUIDELINES.