



**ELECTRONIC COPY**

LG758540249  
Report verification at igi.org



December 19, 2025

IGI Report Number **LG758540249**

Description **LABORATORY GROWN DIAMOND**

Shape and Cutting Style **CUT CORNERED  
RECTANGULAR MODIFIED  
BRILLIANT**

Measurements **10.09 X 7.33 X 5.01 MM**

**GRADING RESULTS**

Carat Weight **3.09 CARATS**

Color Grade **E**

Clarity Grade **VVS 2**

December 19, 2025

IGI Report Number **LG758540249**

Description **LABORATORY GROWN DIAMOND**

Shape and Cutting Style **CUT CORNERED RECTANGULAR  
MODIFIED BRILLIANT**

Measurements **10.09 X 7.33 X 5.01 MM**

**GRADING RESULTS**

Carat Weight **3.09 CARATS**

Color Grade **E**

Clarity Grade **VVS 2**

**ADDITIONAL GRADING INFORMATION**

Polish **EXCELLENT**

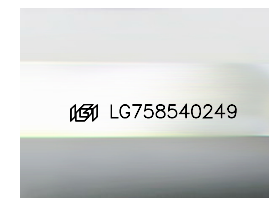
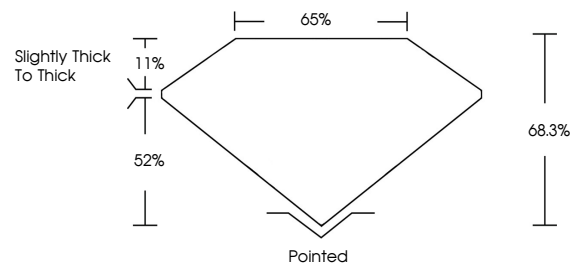
Symmetry **EXCELLENT**

Fluorescence **NONE**

Inscription(s) **IGI LG758540249**

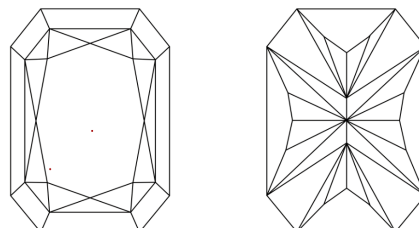
Comments: This Laboratory Grown Diamond was created by Chemical Vapor Deposition (CVD) growth process. Type IIa

**PROPORTIONS**



Sample Image Used

**CLARITY CHARACTERISTICS**



**KEY TO SYMBOLS**

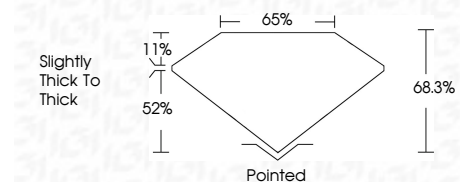
Red symbols indicate internal characteristics.  
Green symbols indicate external characteristics.

**COLOR**

D E F G H I J Faint Very Light Light

**CLARITY**

FL	IF	VVS <sup>1-2</sup>	VS <sup>1-2</sup>	SI <sup>1-2</sup>	I <sup>1-3</sup>
Flawless	Internally Flawless	Very Very Slightly Included	Very Slightly Included	Slightly Included	Included



**ADDITIONAL GRADING INFORMATION**

Polish **EXCELLENT**

Symmetry **EXCELLENT**

Fluorescence **NONE**

Inscription(s) **IGI LG758540249**

Comments: This Laboratory Grown Diamond was created by Chemical Vapor Deposition (CVD) growth process. Type IIa



**IGI**



December 19, 2025	IGI Report No LG758540249	CUT CORNERED RECT. MODIFIED BRILLIANT	10.09 X 7.33 X 5.01 MM	3.09 CARATS	E	VVS 2	68.3%	65%	Slightly Thick To Thick	Pointed	EXCELLENT	EXCELLENT	NONE	IGI LG758540249
Polish	Symmetry	Fluorescence	Inscription(s)	Carat Weight	Color Grade	Clarity Grade	Depth	Table	Graile	Culet	Polish	Symmetry	Fluorescence	Inscription(s)
EXCELLENT	EXCELLENT	NONE	IGI LG758540249	3.09 CARATS	E	VVS 2	68.3%	65%	Slightly Thick To Thick	Pointed	EXCELLENT	EXCELLENT	NONE	IGI LG758540249

Comments: This Laboratory Grown Diamond was created by Chemical Vapor Deposition (CVD) growth process. Type IIa