

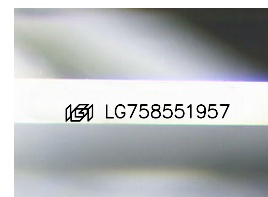
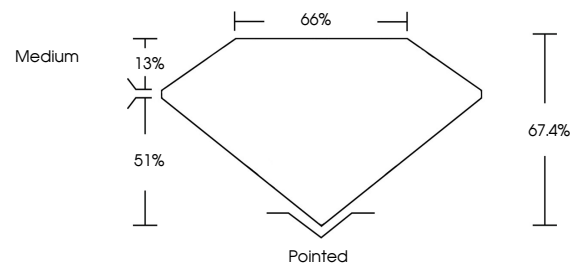


ELECTRONIC COPY

LABORATORY GROWN DIAMOND REPORT

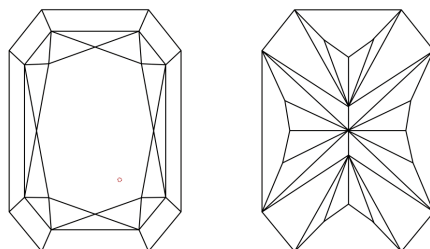
LG758551957
Report verification at lqi.org

PROPORTIONS



Sample Image Used

CLARITY CHARACTERISTICS



KEY TO SYMBOLS

Red symbols indicate internal characteristics.
Green symbols indicate external characteristics.

COLOR

D E F G H I J Faint Very Light Light

CLARITY

FL	IF	VVS ¹⁻²	VS ¹⁻²	SI ¹⁻²	I ¹⁻³
Flawless	Internally Flawless	Very Very Slightly Included	Very Slightly Included	Slightly Included	Included

LABORATORY GROWN DIAMOND REPORT



December 20, 2025

IGI Report Number **LG758551957**Description **LABORATORY GROWN DIAMOND**

Shape and Cutting Style

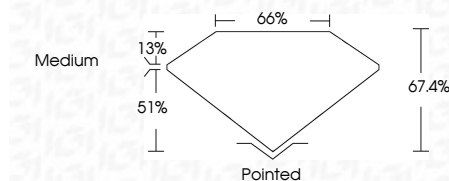
CUT CORNERED
RECTANGULAR MODIFIED
BRILLIANT

Measurements 10.24 X 7.08 X 4.77 MM

GRADING RESULTS

Carat Weight **3.03 CARATS**

Color Grade G

Clarity Grade WS 2

ADDITIONAL GRADING INFORMATION

Polish **EXCELLENT**Symmetry **EXCELLENT**Fluorescence NONEInscription(s) LG758551957

Comments: This Laboratory Grown Diamond was created by Chemical Vapor Deposition (CVD) growth process.
Type IIa



© IGI 2020, International Gemological Institute

FD - 10 20

www.igi.org

THIS DOCUMENT WAS PRODUCED WITH THE FOLLOWING SECURITY MEASURES: SPECIAL DOCUMENT PAPER, INK SCREENS, WATERMARK, BACKGROUND DESIGNS, HOLOGRAM AND OTHER SECURITY FEATURES NOT LISTED AND DO EXCEED DOCUMENT SECURITY INDUSTRY GUIDELINE

December 20, 2025	Carat Weight	3.03 CARATS
GT Report No. LG788551957	Color Grade	G
CUT REPORT RECT. MODIFIED BRILLIANT	Clarity Grade	VVS 2
10.24 X 7.08 X 4.77 MM	Depth	67.4%
	Table	66%
	Girdle	Medium
	Culet	Pointed
	Polish	EXCELLENT
	Symmetry	EXCELLENT
	Fluorescence	NONE
	Inscriptions(s)	1691 LG788551957

Comments:
 This Laboratory Grown Diamond was
 analyzed by Chemical Vapor Deposition
 (CVD) growth process.
 Type IIG