



January 6, 2026

IGI Report Number **LG758568287**

**PRINCESS CUT**  
**LABORATORY GROWN DIAMOND**  
**4.26 X 4.20 X 2.83 MM**

Carat Weight	<b>0.47 CARAT</b>
Color Grade	<b>FANCY VIVID PINK</b>
Clarity Grade	<b>VS 1</b>
Polish	<b>VERY GOOD</b>
Symmetry	<b>VERY GOOD</b>
Fluorescence	<b>SLIGHT</b>
Inscription(s)	<b>IGI LG758568287</b>

Comments: This Laboratory Grown Diamond was created by Chemical Vapor Deposition (CVD) growth process. Indications of post-growth treatment.

**LABORATORY GROWN DIAMOND REPORT**

January 6, 2026

IGI Report Number

**LG758568287**

Description

**LABORATORY GROWN DIAMOND**

Shape and Cutting Style

**PRINCESS CUT**

Measurements

**4.26 X 4.20 X 2.83 MM**

**GRADING RESULTS**

Carat Weight

**0.47 CARAT**

Color Grade

**FANCY VIVID PINK**

Clarity Grade

**VS 1**

**ADDITIONAL GRADING INFORMATION**

Polish

**VERY GOOD**

Symmetry

**VERY GOOD**

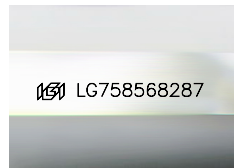
Fluorescence

**SLIGHT**

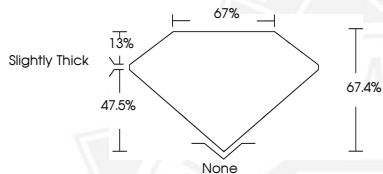
Inscription(s)

**IGI LG758568287**

Comments: This Laboratory Grown Diamond was created by Chemical Vapor Deposition (CVD) growth process. Indications of post-growth treatment.



Sample Image Used



January 6, 2026

IGI Report Number **LG758568287**

**PRINCESS CUT**  
**LABORATORY GROWN DIAMOND**  
**4.26 X 4.20 X 2.83 MM**

Carat Weight	<b>0.47 CARAT</b>
Color Grade	<b>FANCY VIVID PINK</b>
Clarity Grade	<b>VS 1</b>
Polish	<b>VERY GOOD</b>
Symmetry	<b>VERY GOOD</b>
Fluorescence	<b>SLIGHT</b>
Inscription(s)	<b>IGI LG758568287</b>

Comments: This Laboratory Grown Diamond was created by Chemical Vapor Deposition (CVD) growth process. Indications of post-growth treatment.



THIS DOCUMENT WAS PRODUCED WITH THE FOLLOWING SECURITY MEASURES: SPECIAL DOCUMENT PAPER, INK SCREENS, WATERMARK, BACKGROUND DESIGNS, HOLOGRAM AND OTHER SECURITY FEATURES NOT LISTED AND DO EXCEED DOCUMENT SECURITY INDUSTRY GUIDELINES.