



LABORATORY GROWN DIAMOND REPORT

December 24, 2025
 IGI Report Number **LG758572310**
 Description **LABORATORY GROWN DIAMOND**
 Shape and Cutting Style **RECTANGULAR PRINCESS CUT**
 Measurements **4.13 X 3.91 X 2.70 MM**

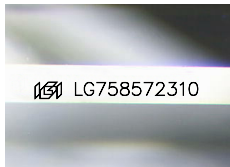
GRADING RESULTS

Carat Weight **0.38 CARAT**
 Color Grade **FANCY INTENSE PINK**
 Clarity Grade **VS 2**

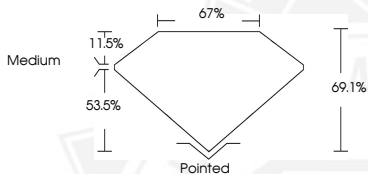
ADDITIONAL GRADING INFORMATION

Polish **VERY GOOD**
 Symmetry **VERY GOOD**
 Fluorescence **SLIGHT**
 Inscription(s) **IGI LG758572310**

Comments: This Laboratory Grown Diamond was created by
 Chemical Vapor Deposition (CVD) growth process.
 Indications of post-growth treatment.



Sample Image Used



December 24, 2025
 IGI Report Number **LG758572310**
 RECTANGULAR PRINCESS CUT
 LABORATORY GROWN DIAMOND
 4.13 X 3.91 X 2.70 MM
 Carat Weight **0.38 CARAT**
 Color Grade **FANCY INTENSE PINK**
 Clarity Grade **VS 2**
 Polish **VERY GOOD**
 Symmetry **VERY GOOD**
 Fluorescence **SLIGHT**
 Inscription(s) **IGI LG758572310**

Comments: This Laboratory Grown Diamond was created by
 Chemical Vapor Deposition (CVD) growth process. Indications of
 post-growth treatment.



December 24, 2025
 IGI Report Number **LG758572310**
 RECTANGULAR PRINCESS CUT
 LABORATORY GROWN DIAMOND
 4.13 X 3.91 X 2.70 MM
 Carat Weight **0.38 CARAT**
 Color Grade **FANCY INTENSE PINK**
 Clarity Grade **VS 2**
 Polish **VERY GOOD**
 Symmetry **VERY GOOD**
 Fluorescence **SLIGHT**
 Inscription(s) **IGI LG758572310**

Comments: This Laboratory Grown Diamond was created by
 Chemical Vapor Deposition (CVD) growth process. Indications of
 post-growth treatment.



THIS DOCUMENT WAS PRODUCED WITH THE FOLLOWING SECURITY MEASURES: SPECIAL DOCUMENT PAPER, INK SCREENS, WATERMARK, BACKGROUND DESIGNS, HOLOGRAM AND OTHER SECURITY FEATURES NOT LISTED AND DO EXCEED DOCUMENT SECURITY INDUSTRY GUIDELINES.