



December 25, 2025

IGI Report Number **LG758572317**

**PEAR BRILLIANT**

**LABORATORY GROWN DIAMOND**

**6.20 X 3.79 X 2.31 MM**

Carat Weight **0.31 CARAT**

Color Grade **FANCY VIVID PINK**

Clarity Grade **VVS 2**

Polish **VERY GOOD**

Symmetry **VERY GOOD**

Fluorescence **STRONG**

Inscription(s) **IGI LG758572317**

Comments: This Laboratory Grown Diamond was created by Chemical Vapor Deposition (CVD) growth process. Indications of post-growth treatment.

**LABORATORY GROWN DIAMOND REPORT**

December 25, 2025

IGI Report Number

**LG758572317**

Description

**LABORATORY GROWN DIAMOND**

Shape and Cutting Style

**PEAR BRILLIANT**

Measurements

**6.20 X 3.79 X 2.31 MM**

**GRADING RESULTS**

Carat Weight

**0.31 CARAT**

Color Grade

**FANCY VIVID PINK**

Clarity Grade

**VVS 2**

**ADDITIONAL GRADING INFORMATION**

Polish

**VERY GOOD**

Symmetry

**VERY GOOD**

Fluorescence

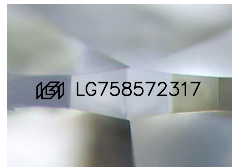
**STRONG**

Inscription(s)

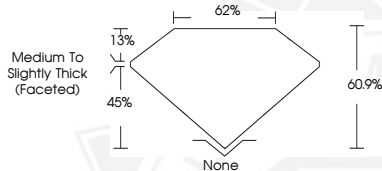
**IGI LG758572317**

Comments: This Laboratory Grown Diamond was created by Chemical Vapor Deposition (CVD) growth process.

Indications of post-growth treatment.



Sample Image Used



December 25, 2025

IGI Report Number **LG758572317**

**PEAR BRILLIANT**

**LABORATORY GROWN DIAMOND**

**6.20 X 3.79 X 2.31 MM**

Carat Weight **0.31 CARAT**

Color Grade **FANCY VIVID PINK**

Clarity Grade **VVS 2**

Polish **VERY GOOD**

Symmetry **VERY GOOD**

Fluorescence **STRONG**

Inscription(s) **IGI LG758572317**

Comments: This Laboratory Grown Diamond was created by Chemical Vapor Deposition (CVD) growth process. Indications of post-growth treatment.



THIS DOCUMENT WAS PRODUCED WITH THE FOLLOWING SECURITY MEASURES: SPECIAL DOCUMENT PAPER, INK SCREENS, WATERMARK, BACKGROUND DESIGNS, HOLOGRAM AND OTHER SECURITY FEATURES NOT LISTED AND DO EXCEED DOCUMENT SECURITY INDUSTRY GUIDELINES.