



**LABORATORY GROWN DIAMOND REPORT**

December 26, 2025  
 IGI Report Number **LG758572491**  
 Description **LABORATORY GROWN DIAMOND**  
 Shape and Cutting Style **PRINCESS CUT**  
 Measurements **4.08 X 3.92 X 2.56 MM**

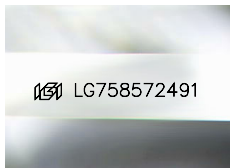
**GRADING RESULTS**

Carat Weight **0.35 CARAT**  
 Color Grade **FANCY INTENSE PINK**  
 Clarity Grade **SI 1**

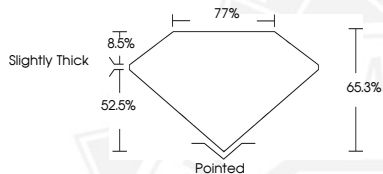
**ADDITIONAL GRADING INFORMATION**

Polish **VERY GOOD**  
 Symmetry **VERY GOOD**  
 Fluorescence **STRONG**  
 Inscription(s) **IGI LG758572491**

Comments: This Laboratory Grown Diamond was created by Chemical Vapor Deposition (CVD) growth process. Indications of post-growth treatment.



Sample Image Used



December 26, 2025  
 IGI Report Number **LG758572491**  
**PRINCESS CUT**  
**LABORATORY GROWN DIAMOND**  
**4.08 X 3.92 X 2.56 MM**  
 Carat Weight **0.35 CARAT**  
 Color Grade **FANCY INTENSE PINK**  
 Clarity Grade **SI 1**  
 Polish **VERY GOOD**  
 Symmetry **VERY GOOD**  
 Fluorescence **STRONG**  
 Inscription(s) **IGI LG758572491**

Comments: This Laboratory Grown Diamond was created by Chemical Vapor Deposition (CVD) growth process. Indications of post-growth treatment.



December 26, 2025  
 IGI Report Number **LG758572491**  
**PRINCESS CUT**  
**LABORATORY GROWN DIAMOND**  
**4.08 X 3.92 X 2.56 MM**  
 Carat Weight **0.35 CARAT**  
 Color Grade **FANCY INTENSE PINK**  
 Clarity Grade **SI 1**  
 Polish **VERY GOOD**  
 Symmetry **VERY GOOD**  
 Fluorescence **STRONG**  
 Inscription(s) **IGI LG758572491**

Comments: This Laboratory Grown Diamond was created by Chemical Vapor Deposition (CVD) growth process. Indications of post-growth treatment.



THIS DOCUMENT WAS PRODUCED WITH THE FOLLOWING SECURITY MEASURES: SPECIAL DOCUMENT PAPER, INK SCREENS, WATERMARK, BACKGROUND DESIGNS, HOLOGRAM AND OTHER SECURITY FEATURES NOT LISTED AND DO EXCEED DOCUMENT SECURITY INDUSTRY GUIDELINES.