



# INTERNATIONAL GEMOLOGICAL INSTITUTE

ELECTRONIC COPY



December 27, 2025

IGI Report Number **LG758572836**

**HEART BRILLIANT**

**LABORATORY GROWN DIAMOND**

**4.48 X 4.88 X 3.02 MM**

Carat Weight **0.39 CARAT**

Color Grade **FANCY INTENSE PINK**

Clarity Grade **VS 2**

Polish **VERY GOOD**

Symmetry **VERY GOOD**

Fluorescence **SLIGHT**

Inscription(s) **IGI LG758572836**

Comments: This Laboratory Grown Diamond was created by Chemical Vapor Deposition (CVD) growth process. Indications of post-growth treatment. Secondary color: Orange

## LABORATORY GROWN DIAMOND REPORT

December 27, 2025

IGI Report Number **LG758572836**

Description **LABORATORY GROWN DIAMOND**

Shape and Cutting Style **HEART BRILLIANT**

Measurements **4.48 X 4.88 X 3.02 MM**

### GRADING RESULTS

Carat Weight **0.39 CARAT**

Color Grade **FANCY INTENSE PINK**

Clarity Grade **VS 2**

### ADDITIONAL GRADING INFORMATION

Polish **VERY GOOD**

Symmetry **VERY GOOD**

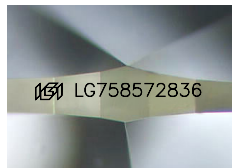
Fluorescence **SLIGHT**

Inscription(s) **IGI LG758572836**

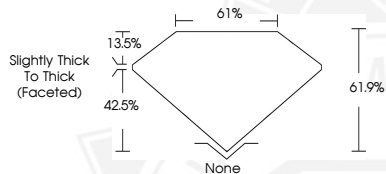
Comments: This Laboratory Grown Diamond was created by Chemical Vapor Deposition (CVD) growth process.

Indications of post-growth treatment.

Secondary color: Orange



Sample Image Used



December 27, 2025

IGI Report Number **LG758572836**

**HEART BRILLIANT**

**LABORATORY GROWN DIAMOND**

**4.48 X 4.88 X 3.02 MM**

Carat Weight **0.39 CARAT**

Color Grade **FANCY INTENSE PINK**

Clarity Grade **VS 2**

Polish **VERY GOOD**

Symmetry **VERY GOOD**

Fluorescence **SLIGHT**

Inscription(s) **IGI LG758572836**

Comments: This Laboratory Grown Diamond was created by Chemical Vapor Deposition (CVD) growth process. Indications of post-growth treatment. Secondary color: Orange



THIS DOCUMENT WAS PRODUCED WITH THE FOLLOWING SECURITY MEASURES: SPECIAL DOCUMENT PAPER, INK SCREENS, WATERMARK BACKGROUND DESIGNS, HOLOGRAM AND OTHER SECURITY FEATURES NOT LISTED AND DO EXCEED DOCUMENT SECURITY INDUSTRY GUIDELINES.

For terms & conditions and to verify this report, please visit [www.igi.org](http://www.igi.org)