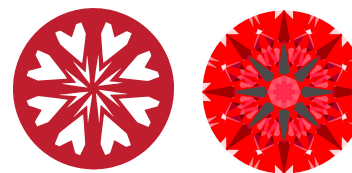




**Light Performance Grade: Exceptional**



**Structured Light Environment Representation**



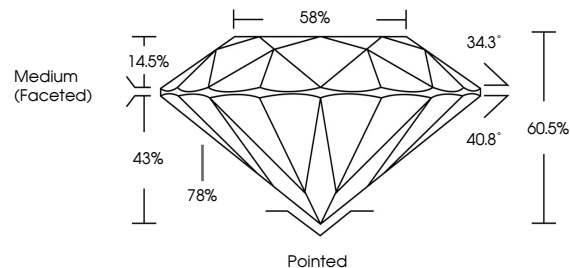
**COLOR**



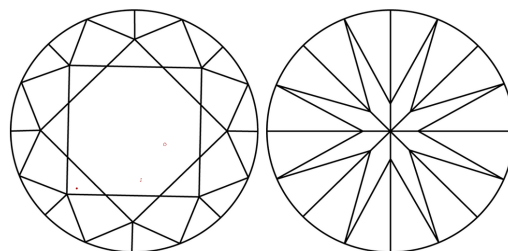
**CLARITY**



**PROPORTIONS**

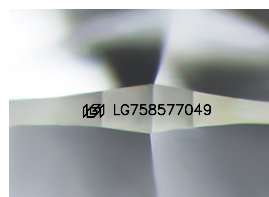


**CLARITY CHARACTERISTICS**



**KEY TO SYMBOLS**

Red symbols indicate internal characteristics.  
Green symbols indicate external characteristics.



Sample Image Used

**ELECTRONIC COPY**

**LABORATORY GROWN DIAMOND REPORT**

December 20, 2025  
IGI Report Number **LG758577049**  
Description **LABORATORY GROWN DIAMOND**  
Shape and Cutting Style **ROUND BRILLIANT**  
Measurements **9.57 - 9.60 x 5.80 mm**

**GRADING RESULTS**

Carat Weight **3.24 CARATS**  
Color Grade **E**  
Clarity Grade **VVS 2**  
Cut Grade **IDEAL**

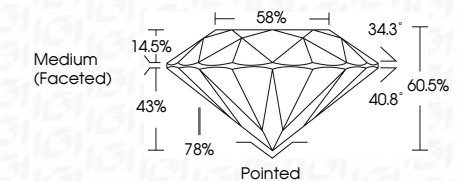
**ADDITIONAL GRADING INFORMATION**

Polish **EXCELLENT**  
Symmetry **EXCELLENT**  
Fluorescence **NONE**  
Inscription(s) **IGI LG758577049**

Comments: HEARTS & ARROWS  
This Laboratory Grown Diamond was created by Chemical Vapor Deposition (CVD) growth process. Type IIa



December 20, 2025  
IGI Report Number **LG758577049**  
Description **LABORATORY GROWN DIAMOND**  
Shape and Cutting Style **ROUND BRILLIANT**  
Measurements **9.57 - 9.60 X 5.80 MM**  
**GRADING RESULTS**  
Carat Weight **3.24 CARATS**  
Color Grade **E**  
Clarity Grade **VVS 2**  
Cut Grade **IDEAL**



**ADDITIONAL GRADING INFORMATION**

Polish **EXCELLENT**  
Symmetry **EXCELLENT**  
Fluorescence **NONE**  
Inscription(s) **IGI LG758577049**  
Comments: HEARTS & ARROWS  
This Laboratory Grown Diamond was created by Chemical Vapor Deposition (CVD) growth process. Type IIa



**IGI**

December 20, 2025 IGI Report No LG758577049 ROUND BRILLIANT	3.24 CARATS E	VVS 2 IDEAL	60.5% 58%	Medium (Faceted)	Pointed EXCELLENT EXCELLENT NONE	IGI LG758577049
9.57 - 9.60 X 5.80 MM Carat Weight Color Grade	3.24 CARATS E	VVS 2 IDEAL	60.5% 58%	Medium (Faceted)	Pointed EXCELLENT EXCELLENT NONE	IGI LG758577049
Clarity Grade Cut Grade Depth Table Girdle	VVS 2 IDEAL	VVS 2 IDEAL	60.5% 58%	Medium (Faceted)	Pointed EXCELLENT EXCELLENT NONE	IGI LG758577049
Cut Polish Symmetry Fluorescence Inscription(s)	EXCELLENT EXCELLENT EXCELLENT NONE	EXCELLENT EXCELLENT EXCELLENT NONE	EXCELLENT EXCELLENT EXCELLENT NONE	EXCELLENT EXCELLENT EXCELLENT NONE	EXCELLENT EXCELLENT EXCELLENT NONE	EXCELLENT EXCELLENT EXCELLENT NONE

