



ELECTRONIC COPY

LG758586849
Report verification at igi.org



December 23, 2025

IGI Report Number **LG758586849**

Description **LABORATORY GROWN DIAMOND**

Shape and Cutting Style **EMERALD CUT**

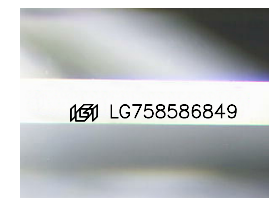
Measurements **8.62 X 5.95 X 3.97 MM**

GRADING RESULTS

Carat Weight **2.00 CARATS**

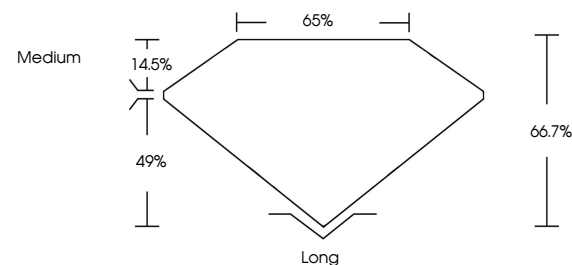
Color Grade **H**

Clarity Grade **VVS 2**

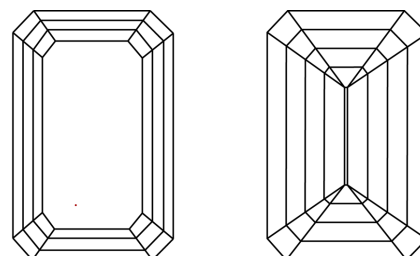


Sample Image Used

PROPORTIONS



CLARITY CHARACTERISTICS



KEY TO SYMBOLS

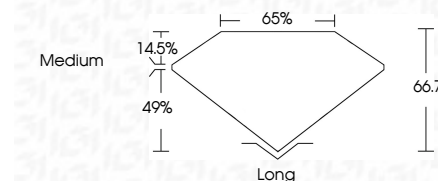
Red symbols indicate internal characteristics.
Green symbols indicate external characteristics.

COLOR

D E F G H I J Faint Very Light Light

CLARITY

FL	IF	VVS ¹⁻²	VS ¹⁻²	SI ¹⁻²	I ¹⁻³
Flawless	Internally Flawless	Very Very Slightly Included	Very Slightly Included	Slightly Included	Included



ADDITIONAL GRADING INFORMATION

Polish **EXCELLENT**

Symmetry **EXCELLENT**

Fluorescence **NONE**

Inscription(s) **IGI LG758586849**

Comments: This Laboratory Grown Diamond was created by Chemical Vapor Deposition (CVD) growth process. Type IIa



IGI



December 23, 2025
IGI Report No. LG758586849
EMERALD CUT
8.62 X 5.95 X 3.97 MM
2.00 CARATS
H
Color Grade
VVS 2
Depth
66.7%
Table
65%
Girdle
Medium
Culet
Long
Polish
EXCELLENT
Symmetry
EXCELLENT
Fluorescence
NONE
Inscription(s)
IGI LG758586849
Comments: This Laboratory Grown Diamond was created by Chemical Vapor Deposition (CVD) growth process. Type IIa