



**ELECTRONIC COPY**

LG758599178  
Report verification at igi.org



February 9, 2026

IGI Report Number **LG758599178**

Description **LABORATORY GROWN DIAMOND**

Shape and Cutting Style **ROUND BRILLIANT**

Measurements **10.27 - 10.30 X 6.26 MM**

**GRADING RESULTS**

Carat Weight **4.05 CARATS**

Color Grade **E**

Clarity Grade **VVS 2**

Cut Grade **IDEAL**

February 9, 2026  
IGI Report Number **LG758599178**  
Description **LABORATORY GROWN DIAMOND**  
Shape and Cutting Style **ROUND BRILLIANT**  
Measurements **10.27 - 10.30 X 6.26 MM**

**GRADING RESULTS**

Carat Weight **4.05 CARATS**

Color Grade **E**

Clarity Grade **VVS 2**

Cut Grade **IDEAL**

**ADDITIONAL GRADING INFORMATION**

Polish **EXCELLENT**

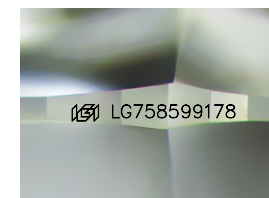
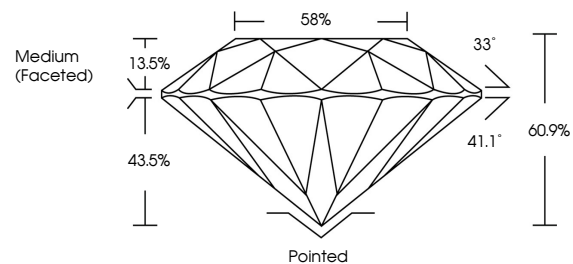
Symmetry **EXCELLENT**

Fluorescence **NONE**

Inscription(s) **IGI LG758599178**

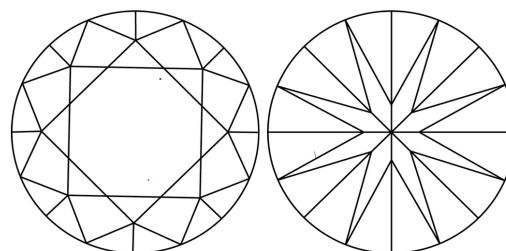
Comments: This Laboratory Grown Diamond was created by Chemical Vapor Deposition (CVD) growth process.  
Type IIa

**PROPORTIONS**



Sample Image Used

**CLARITY CHARACTERISTICS**



**KEY TO SYMBOLS**

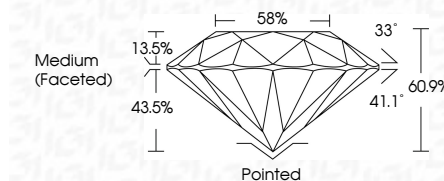
Red symbols indicate internal characteristics.  
Green symbols indicate external characteristics.

**COLOR**

D E F G H I J Faint Very Light Light

**CLARITY**

| FL       | IF                  | VVS <sup>1-2</sup>          | VS <sup>1-2</sup>      | SI <sup>1-2</sup> | I <sup>1-3</sup> |
|----------|---------------------|-----------------------------|------------------------|-------------------|------------------|
| Flawless | Internally Flawless | Very Very Slightly Included | Very Slightly Included | Slightly Included | Included         |



**ADDITIONAL GRADING INFORMATION**

Polish **EXCELLENT**

Symmetry **EXCELLENT**

Fluorescence **NONE**

Inscription(s) **IGI LG758599178**

Comments: This Laboratory Grown Diamond was created by Chemical Vapor Deposition (CVD) growth process.  
Type IIa



**IGI**



|                  |                           |                        |                    |          |              |              |              |            |                         |                |                  |  |             |                        |
|------------------|---------------------------|------------------------|--------------------|----------|--------------|--------------|--------------|------------|-------------------------|----------------|------------------|--|-------------|------------------------|
| February 9, 2026 | IGI Report No LG758599178 | <b>ROUND BRILLIANT</b> | <b>4.05 CARATS</b> | <b>E</b> | <b>VVS 2</b> | <b>IDEAL</b> | <b>60.9%</b> | <b>58%</b> | <b>Medium (Faceted)</b> | <b>Pointed</b> | <b>EXCELLENT</b> | <b>EXCELLENT</b>   | <b>NONE</b> | <b>IGI LG758599178</b> |
| Carat Weight     | Color Grade               | Clarity Grade          | Cut Grade          | Depth    | Table        | Girdle       | Culet        | Polish     | Symmetry                | Fluorescence   | Inscription(s)   | Comments: This Laboratory Grown Diamond was created by Chemical Vapor Deposition (CVD) growth process.<br>Type IIa |             |                        |