



**ELECTRONIC COPY**

LG759505782  
Report verification at igi.org



February 4, 2026

IGI Report Number **LG759505782**

Description **LABORATORY GROWN DIAMOND**

Shape and Cutting Style **ROUND BRILLIANT**

Measurements **8.69 - 8.71 X 5.38 MM**

**GRADING RESULTS**

Carat Weight **2.54 CARATS**

Color Grade **F**

Clarity Grade **VVS 2**

Cut Grade **IDEAL**

February 4, 2026

IGI Report Number **LG759505782**

Description **LABORATORY GROWN DIAMOND**

Shape and Cutting Style **ROUND BRILLIANT**

Measurements **8.69 - 8.71 X 5.38 MM**

**GRADING RESULTS**

Carat Weight **2.54 CARATS**

Color Grade **F**

Clarity Grade **VVS 2**

Cut Grade **IDEAL**

**ADDITIONAL GRADING INFORMATION**

Polish **EXCELLENT**

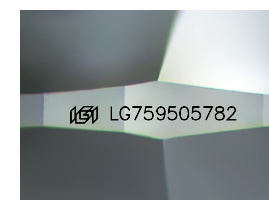
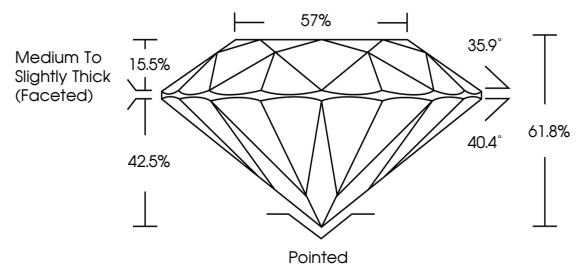
Symmetry **EXCELLENT**

Fluorescence **NONE**

Inscription(s) **IGI LG759505782**

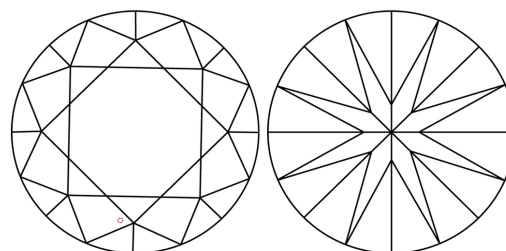
Comments: This Laboratory Grown Diamond was created by Chemical Vapor Deposition (CVD) growth process. Type IIa

**PROPORTIONS**



Sample Image Used

**CLARITY CHARACTERISTICS**



**KEY TO SYMBOLS**

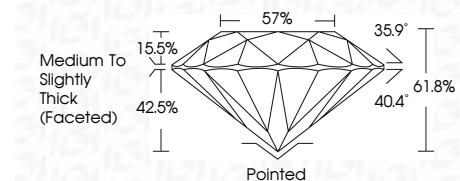
Red symbols indicate internal characteristics.  
Green symbols indicate external characteristics.

**COLOR**

D E F G H I J Faint Very Light Light

**CLARITY**

| FL       | IF                  | VVS <sup>1-2</sup>          | VS <sup>1-2</sup>      | SI <sup>1-2</sup> | I <sup>1-3</sup> |
|----------|---------------------|-----------------------------|------------------------|-------------------|------------------|
| Flawless | Internally Flawless | Very Very Slightly Included | Very Slightly Included | Slightly Included | Included         |



**ADDITIONAL GRADING INFORMATION**

Polish **EXCELLENT**

Symmetry **EXCELLENT**

Fluorescence **NONE**

Inscription(s) **IGI LG759505782**

Comments: This Laboratory Grown Diamond was created by Chemical Vapor Deposition (CVD) growth process. Type IIa



**IGI**



|                  |                           |                 |                       |             |       |        |        |          |              |                                    |   |           |           |      |                 |
|------------------|---------------------------|-----------------|-----------------------|-------------|-------|--------|--------|----------|--------------|------------------------------------|---|-----------|-----------|------|-----------------|
| February 4, 2026 | IGI Report No LG759505782 | ROUND BRILLIANT | 8.69 - 8.71 X 5.38 MM | 2.54 CARATS | F     | VVS 2  | IDEAL  | 61.8%    | 57%          | Medium To Slightly Thick (Faceted) | Pointed   | EXCELLENT | EXCELLENT | NONE | IGI LG759505782 |
| Carat Weight     | Color Grade               | Clarity Grade   | Cut Grade             | Depth       | Table | Girdle | Polish | Symmetry | Fluorescence | Inscription(s)                     | Comments: This Laboratory Grown Diamond was created by Chemical Vapor Deposition (CVD) growth process. Type IIa |           |           |      |                 |