



ELECTRONIC COPY

LG759505793
Report verification at igi.org



February 2, 2026

IGI Report Number **LG759505793**

Description **LABORATORY GROWN DIAMOND**

Shape and Cutting Style **EMERALD CUT**

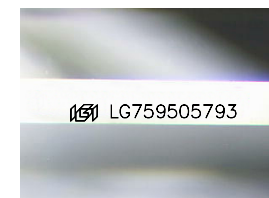
Measurements **8.58 X 5.99 X 4.02 MM**

GRADING RESULTS

Carat Weight **2.02 CARATS**

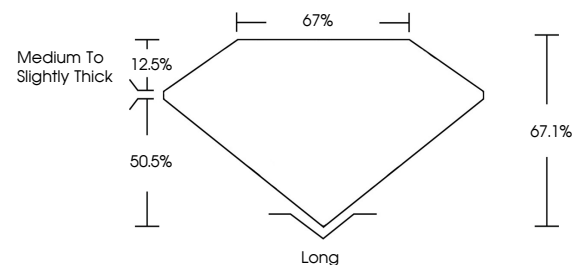
Color Grade **G**

Clarity Grade **VVS 1**

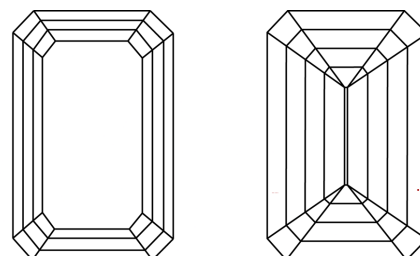


Sample Image Used

PROPORTIONS



CLARITY CHARACTERISTICS



KEY TO SYMBOLS

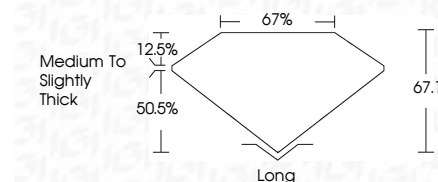
Red symbols indicate internal characteristics.
Green symbols indicate external characteristics.

COLOR

D E F G H I J Faint Very Light Light

CLARITY

| FL | IF | VVS ¹⁻² | VS ¹⁻² | SI ¹⁻² | I ¹⁻³ |
|----------|---------------------|-----------------------------|------------------------|-------------------|------------------|
| Flawless | Internally Flawless | Very Very Slightly Included | Very Slightly Included | Slightly Included | Included |



ADDITIONAL GRADING INFORMATION

Polish **EXCELLENT**

Symmetry **EXCELLENT**

Fluorescence **NONE**

Inscription(s) **IGI LG759505793**

Comments: This Laboratory Grown Diamond was created by Chemical Vapor Deposition (CVD) growth process. Type IIa



IGI



| | | | | | | | | | | | | | |
|----------------------------|----------------------------|-----------------------|--------------|-------------|---------------|-------|-------|--------------------------|-------|-----------|-----------|--------------|-----------------|
| February 2, 2026 | IGI Report No. LG759505793 | EMERALD CUT | 2.02 CARATS | G | VVS 1 | 67.1% | 67% | Medium to Slightly Thick | Long | EXCELLENT | EXCELLENT | NONE | IGI LG759505793 |
| IGI Report No. LG759505793 | EMERALD CUT | 8.58 X 5.99 X 4.02 MM | Carat Weight | Color Grade | Clarity Grade | Table | Depth | Girdle | Culet | Polish | Symmetry | Fluorescence | Inscription(s) |

Comments: This Laboratory Grown Diamond was created by Chemical Vapor Deposition (CVD) growth process. Type IIa