



**ELECTRONIC COPY**

LG759506518  
Report verification at igi.org



February 7, 2026

IGI Report Number **LG759506518**

Description **LABORATORY GROWN DIAMOND**

Shape and Cutting Style **PRINCESS CUT**

Measurements **9.46 X 9.30 X 6.72 MM**

**GRADING RESULTS**

Carat Weight **5.03 CARATS**

Color Grade **F**

Clarity Grade **VS 1**

February 7, 2026  
IGI Report Number **LG759506518**  
Description **LABORATORY GROWN DIAMOND**  
Shape and Cutting Style **PRINCESS CUT**  
Measurements **9.46 X 9.30 X 6.72 MM**

**GRADING RESULTS**

Carat Weight **5.03 CARATS**

Color Grade **F**

Clarity Grade **VS 1**

**ADDITIONAL GRADING INFORMATION**

Polish **EXCELLENT**

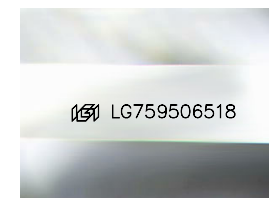
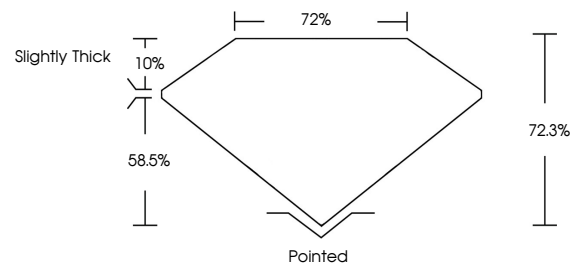
Symmetry **EXCELLENT**

Fluorescence **NONE**

Inscription(s) **IGI LG759506518**

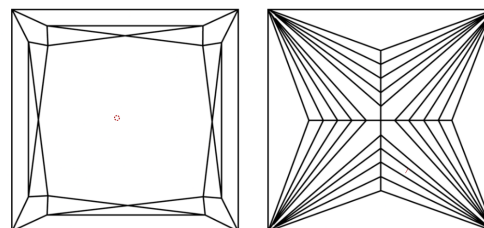
Comments: This Laboratory Grown Diamond was created by Chemical Vapor Deposition (CVD) growth process. Type IIa

**PROPORTIONS**



Sample Image Used

**CLARITY CHARACTERISTICS**



**KEY TO SYMBOLS**

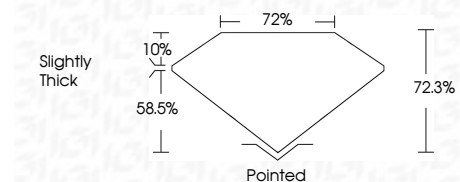
Red symbols indicate internal characteristics.  
Green symbols indicate external characteristics.

**COLOR**

D E F G H I J Faint Very Light Light

**CLARITY**

FL	IF	VS <sup>1-2</sup>	VS <sup>1-2</sup>	SI <sup>1-2</sup>	I <sup>1-3</sup>
Flawless	Internally Flawless	Very Very Slightly Included	Very Slightly Included	Slightly Included	Included



**ADDITIONAL GRADING INFORMATION**

Polish **EXCELLENT**

Symmetry **EXCELLENT**

Fluorescence **NONE**

Inscription(s) **IGI LG759506518**

Comments: This Laboratory Grown Diamond was created by Chemical Vapor Deposition (CVD) growth process. Type IIa



**IGI**



February 7, 2026  
IGI Report No LG759506518  
**PRINCESS CUT**  
9.46 X 9.30 X 6.72 MM  
5.03 CARATS  
F  
5.03 CARATS  
F  
VS 1  
72.3%  
72%  
Slightly Thick  
Pointed  
EXCELLENT  
EXCELLENT  
NONE  
NONE  
IGI LG759506518  
Comments: This Laboratory Grown Diamond was created by Chemical Vapor Deposition (CVD) growth process. Type IIa