



February 2, 2026

IGI Report Number **LG759508699**

**ROUND BRILLIANT  
LABORATORY GROWN DIAMOND  
5.02 - 5.08 X 3.15 MM**

**0.49 CARAT  
D  
VS 1  
IDEAL  
EXCELLENT  
EXCELLENT  
NONE  
None**  
Inscription(s) **IGI LG759508699**

Comments: As Grown - No indication of post-growth treatment. This Laboratory Grown Diamond was created by High Pressure High Temperature (HPHT) growth process. Type II

**LABORATORY GROWN DIAMOND REPORT**

February 2, 2026  
IGI Report Number **LG759508699**  
Description **LABORATORY GROWN DIAMOND**  
Shape and Cutting Style **ROUND BRILLIANT**  
Measurements **5.02 - 5.08 X 3.15 MM**

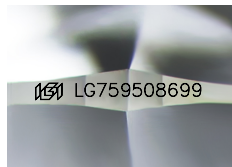
**GRADING RESULTS**

Carat Weight **0.49 CARAT**  
Color Grade **D**  
Clarity Grade **VS 1**  
Cut Grade **IDEAL**

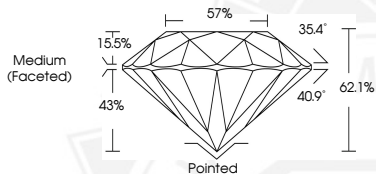
**ADDITIONAL GRADING INFORMATION**

Polish **EXCELLENT**  
Symmetry **EXCELLENT**  
Fluorescence **NONE**  
Inscription(s) **IGI LG759508699**

Comments: As Grown - No indication of post-growth treatment. This Laboratory Grown Diamond was created by High Pressure High Temperature (HPHT) growth process. Type II



Sample Image Used



February 2, 2026

IGI Report Number **LG759508699**

**ROUND BRILLIANT  
LABORATORY GROWN DIAMOND  
5.02 - 5.08 X 3.15 MM**

**0.49 CARAT  
D  
VS 1  
IDEAL  
EXCELLENT  
EXCELLENT  
NONE  
None**  
Inscription(s) **IGI LG759508699**

Comments: As Grown - No indication of post-growth treatment. This Laboratory Grown Diamond was created by High Pressure High Temperature (HPHT) growth process. Type II



THIS DOCUMENT WAS PRODUCED WITH THE FOLLOWING SECURITY MEASURES: SPECIAL DOCUMENT PAPER, INK SCREENS, WATERMARK, BACKGROUND DESIGNS, HOLOGRAM AND OTHER SECURITY FEATURES NOT LISTED AND DO EXCEED DOCUMENT SECURITY INDUSTRY GUIDELINES.