



ELECTRONIC COPY

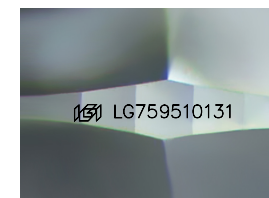
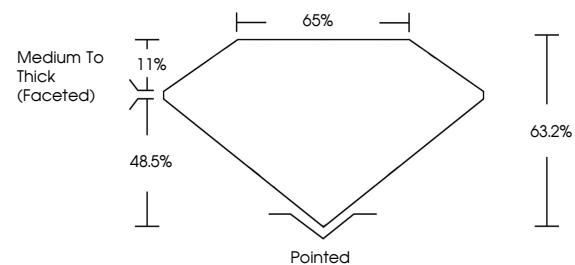
LG759510131
Report verification at igi.org



February 9, 2026
IGI Report Number **LG759510131**
Description **LABORATORY GROWN DIAMOND**
Shape and Cutting Style **CUSHION MODIFIED BRILLIANT**
Measurements **8.61 X 6.22 X 3.93 MM**
GRADING RESULTS
Carat Weight **1.59 CARAT**
Color Grade **I**
Clarity Grade **VS 1**

February 9, 2026
IGI Report Number **LG759510131**
Description **LABORATORY GROWN DIAMOND**
Shape and Cutting Style **CUSHION MODIFIED BRILLIANT**
Measurements **8.61 X 6.22 X 3.93 MM**

PROPORTIONS

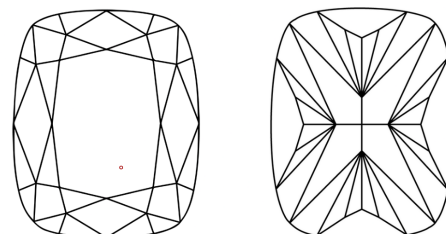


Sample Image Used

GRADING RESULTS

Carat Weight **1.59 CARAT**
Color Grade **I**
Clarity Grade **VS 1**

CLARITY CHARACTERISTICS



KEY TO SYMBOLS

Red symbols indicate internal characteristics.
Green symbols indicate external characteristics.

ADDITIONAL GRADING INFORMATION

Polish **VERY GOOD**
Symmetry **VERY GOOD**
Fluorescence **NONE**
Inscription(s) **IGI LG759510131**

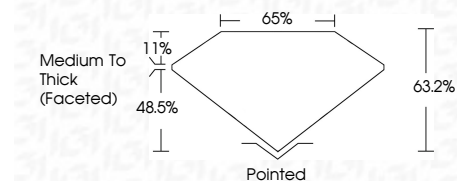
Comments: This Laboratory Grown Diamond was created by Chemical Vapor Deposition (CVD) growth process.
Type IIa

COLOR

D E F G H I J Faint Very Light Light

CLARITY

FL	IF	VS ¹⁻²	VS ¹⁻²	SI ¹⁻²	I ¹⁻³
Flawless	Internally Flawless	Very Very Slightly Included	Very Slightly Included	Slightly Included	Included



ADDITIONAL GRADING INFORMATION

Polish **VERY GOOD**
Symmetry **VERY GOOD**
Fluorescence **NONE**
Inscription(s) **IGI LG759510131**
Comments: This Laboratory Grown Diamond was created by Chemical Vapor Deposition (CVD) growth process.
Type IIa



February 9, 2026
IGI Report No LG759510131
CUSHION MODIFIED BRILLIANT
8.61 X 6.22 X 3.93 MM
1.59 CARAT
Color Grade **I**
Clarity Grade **VS 1**
Depth **63.2%**
Table **65%**
Girdle **Medium To Thick (Faceted)**
Culet **Pointed**
Polish **VERY GOOD**
Symmetry **VERY GOOD**
Fluorescence **NONE**
Inscription(s) **IGI LG759510131**

Comments: This Laboratory Grown Diamond was created by Chemical Vapor Deposition (CVD) growth process.
Type IIa