



ELECTRONIC COPY

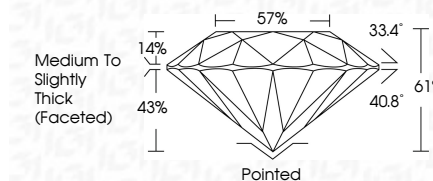
LG759513271
Report verification at igi.org



January 29, 2026
IGI Report Number **LG759513271**
Description **LABORATORY GROWN DIAMOND**
Shape and Cutting Style **ROUND BRILLIANT**
Measurements **8.13 - 8.18 X 4.98 MM**

GRADING RESULTS

Carat Weight **2.04 CARATS**
Color Grade **D**
Clarity Grade **VS 2**
Cut Grade **IDEAL**

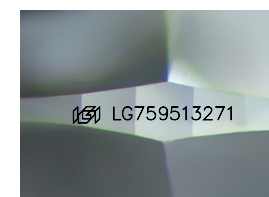


ADDITIONAL GRADING INFORMATION

Polish **EXCELLENT**
Symmetry **EXCELLENT**
Fluorescence **NONE**
Inscription(s) **IGI LG759513271**
Comments: This Laboratory Grown Diamond was created by Chemical Vapor Deposition (CVD) growth process. Type IIa

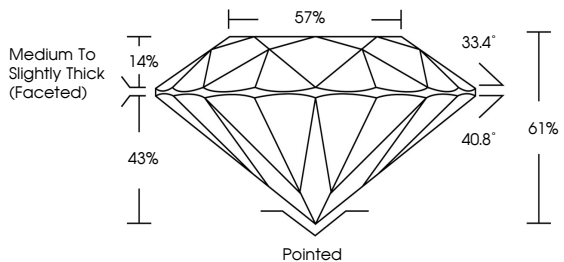


January 29, 2026
IGI Report No LG759513271
ROUND BRILLIANT
8.13 - 8.18 X 4.98 MM
2.04 CARATS
Color Grade **D**
Clarity Grade **VS 2**
Cut Grade **IDEAL**
Depth **61%**
Table **57%**
Girdle **Medium To Slightly Thick (Faceted)**
Culet **Pointed**
Polish **EXCELLENT**
Symmetry **EXCELLENT**
Fluorescence **NONE**
Inscription(s) **IGI LG759513271**
Comments: This Laboratory Grown Diamond was created by Chemical Vapor Deposition (CVD) growth process. Type IIa

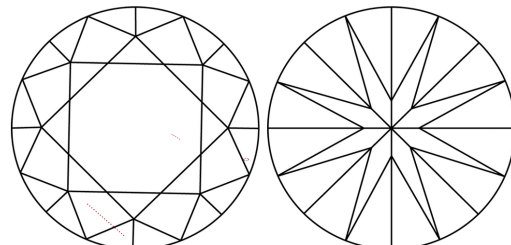


Sample Image Used

PROPORTIONS



CLARITY CHARACTERISTICS



KEY TO SYMBOLS

Red symbols indicate internal characteristics.
Green symbols indicate external characteristics.

COLOR

D E F G H I J Faint Very Light Light

CLARITY

FL	IF	VS ¹⁻²	VS ¹⁻²	SI ¹⁻²	I ¹⁻³
Flawless	Internally Flawless	Very Very Slightly Included	Very Slightly Included	Slightly Included	Included



January 29, 2026
IGI Report Number **LG759513271**
Description **LABORATORY GROWN DIAMOND**
Shape and Cutting Style **ROUND BRILLIANT**
Measurements **8.13 - 8.18 X 4.98 MM**

GRADING RESULTS

Carat Weight **2.04 CARATS**
Color Grade **D**
Clarity Grade **VS 2**
Cut Grade **IDEAL**

ADDITIONAL GRADING INFORMATION

Polish **EXCELLENT**
Symmetry **EXCELLENT**
Fluorescence **NONE**
Inscription(s) **IGI LG759513271**

Comments: This Laboratory Grown Diamond was created by Chemical Vapor Deposition (CVD) growth process. Type IIa