



ELECTRONIC COPY

LG759515839
Report verification at igi.org



December 22, 2025

IGI Report Number **LG759515839**

Description **LABORATORY GROWN DIAMOND**

Shape and Cutting Style **CUT CORNERED
RECTANGULAR MODIFIED
BRILLIANT**

Measurements **10.28 X 7.07 X 4.85 MM**

GRADING RESULTS

Carat Weight **2.98 CARATS**

Color Grade **D**

Clarity Grade **VS 1**

December 22, 2025

IGI Report Number **LG759515839**

Description **LABORATORY GROWN DIAMOND**

Shape and Cutting Style **CUT CORNERED RECTANGULAR
MODIFIED BRILLIANT**

Measurements **10.28 X 7.07 X 4.85 MM**

GRADING RESULTS

Carat Weight **2.98 CARATS**

Color Grade **D**

Clarity Grade **VS 1**

ADDITIONAL GRADING INFORMATION

Polish **EXCELLENT**

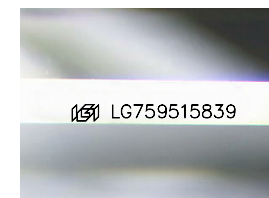
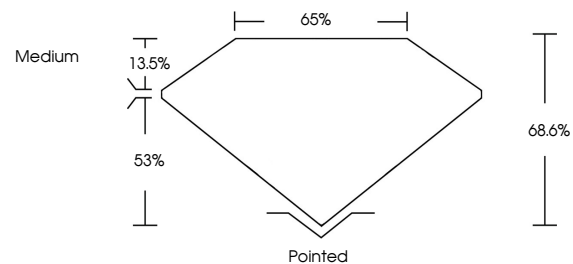
Symmetry **EXCELLENT**

Fluorescence **NONE**

Inscription(s) **IGI LG759515839**

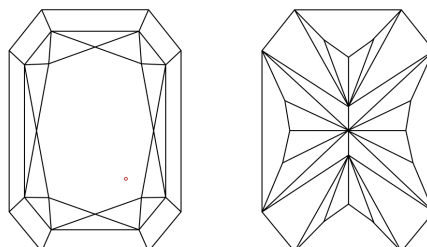
Comments: This Laboratory Grown Diamond was created by Chemical Vapor Deposition (CVD) growth process. Type IIa

PROPORTIONS



Sample Image Used

CLARITY CHARACTERISTICS



KEY TO SYMBOLS

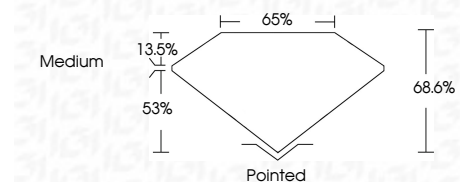
Red symbols indicate internal characteristics.
Green symbols indicate external characteristics.

COLOR

D E F G H I J Faint Very Light Light

CLARITY

FL	IF	VS ¹⁻²	VS ¹⁻²	SI ¹⁻²	I ¹⁻³
Flawless	Internally Flawless	Very Very Slightly Included	Very Slightly Included	Slightly Included	Included



ADDITIONAL GRADING INFORMATION

Polish **EXCELLENT**

Symmetry **EXCELLENT**

Fluorescence **NONE**

Inscription(s) **IGI LG759515839**

Comments: This Laboratory Grown Diamond was created by Chemical Vapor Deposition (CVD) growth process. Type IIa



IGI



December 22, 2025
IGI Report No LG759515839
CUT CORNERED RECT. MODIFIED BRILLIANT
10.28 X 7.07 X 4.85 MM
2.98 CARATS
D
Color Grade
VS 1
Depth 68.6%
Table 13.5%
Girdle 53%
Medium
Pointed
EXCELLENT
EXCELLENT
NONE
IGI LG759515839
Comments: This Laboratory Grown Diamond was created by Chemical Vapor Deposition (CVD) growth process. Type IIa