



INTERNATIONAL GEMOLOGICAL INSTITUTE

ELECTRONIC COPY

LABORATORY GROWN DIAMOND REPORT

December 23, 2025

IGI Report Number

LG759517304

Description

LABORATORY GROWN DIAMOND

Shape and Cutting Style

ROUND BRILLIANT

Measurements

5.14 - 5.18 X 3.21 MM

GRADING RESULTS

Carat Weight

0.53 CARAT

Color Grade

E

Clarity Grade

VVS 1

Cut Grade

VERY GOOD

ADDITIONAL GRADING INFORMATION

Polish

GOOD

Symmetry

VERY GOOD

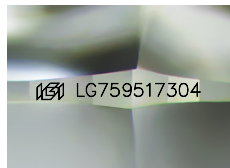
Fluorescence

NONE

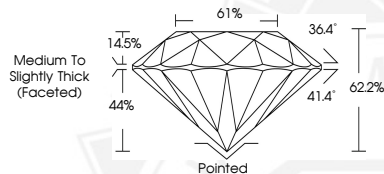
Inscription(s)

IGI LG759517304

Comments: This Laboratory Grown Diamond was created by Chemical Vapor Deposition (CVD) growth process. Type IIa



Sample Image Used



December 23, 2025

IGI Report Number LG759517304

ROUND BRILLIANT

LABORATORY GROWN DIAMOND

5.14 - 5.18 X 3.21 MM

Carat Weight 0.53 CARAT

Color Grade E

Clarity Grade VVS 1

Cut Grade VERY GOOD

Polish GOOD

Symmetry VERY GOOD

Fluorescence NONE

Inscription(s) IGI LG759517304

Comments: This Laboratory Grown Diamond was created by Chemical Vapor Deposition (CVD) growth process. Type IIa



December 23, 2025

IGI Report Number LG759517304

ROUND BRILLIANT

LABORATORY GROWN DIAMOND

5.14 - 5.18 X 3.21 MM

Carat Weight 0.53 CARAT

Color Grade E

Clarity Grade VVS 1

Cut Grade VERY GOOD

Polish GOOD

Symmetry VERY GOOD

Fluorescence NONE

Inscription(s) IGI LG759517304

Comments: This Laboratory Grown Diamond was created by Chemical Vapor Deposition (CVD) growth process. Type IIa



THIS DOCUMENT WAS PRODUCED WITH THE FOLLOWING SECURITY MEASURES: SPECIAL DOCUMENT PAPER, INK SCREENS, WATERMARK, BACKGROUND DESIGNS, HOLOGRAM AND OTHER SECURITY FEATURES NOT LISTED AND DO EXCEED DOCUMENT SECURITY INDUSTRY GUIDELINES.

For terms & conditions and to verify this report, please visit www.igi.org