

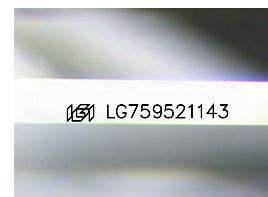
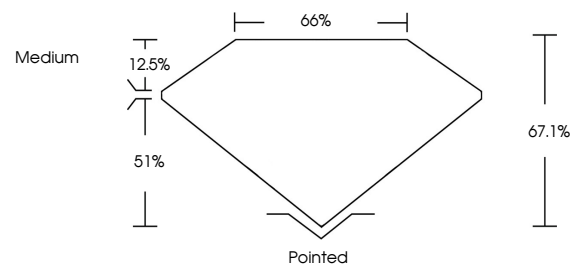


**ELECTRONIC COPY**

## LABORATORY GROWN DIAMOND REPORT

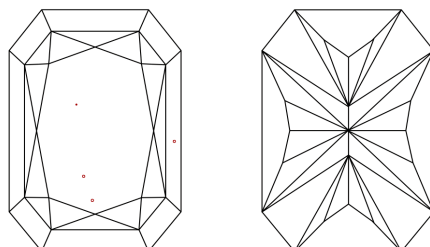
LG759521143  
Report verification at [lgi.org](https://lgi.org)

## PROPORTIONS



Sample Image Used

## CLARITY CHARACTERISTICS



### KEY TO SYMBOLS

Red symbols indicate internal characteristics.  
Green symbols indicate external characteristics.

## COLOR

D E F G H I J Faint Very Light Light

## CLARITY

FL	IF	VVS <sup>1-2</sup>	VS <sup>1-2</sup>	SI <sup>1-2</sup>	I <sup>1-3</sup>
Flawless	Internally Flawless	Very Very Slightly Included	Very Slightly Included	Slightly Included	Included

## LABORATORY GROWN DIAMOND REPORT



December 22, 2025

IGI Report Number LG759521143

Description **LABORATORY GROWN DIAMOND**

Shape and Cutting Style

CUT CORNERED  
RECTANGULAR MODIFIED  
BRILLIANT

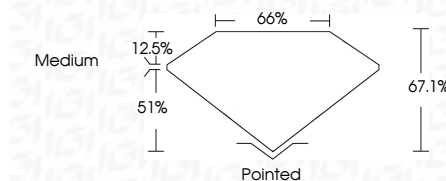
Measurements 9.67 X 6.75 X 4.53 MM

## GRADING RESULTS

Carat Weight **2.57 CARATS**

Color Grade G

Clarity Grade VS 1



### ADDITIONAL GRADING INFORMATION

Polish **EXCELLENT**Symmetry **EXCELLENT**Fluorescence NONEInscription(s)  LG759521143

Comments: This Laboratory Grown Diamond was created by Chemical Vapor Deposition (CVD) growth process.  
Type IIa



© IGI 2020, International Gemological Institute

FD - 10 20

**www.igi.org**

THIS DOCUMENT WAS PRODUCED WITH THE FOLLOWING SECURITY MEASURES: SPECIAL DOCUMENT PAPER, INK SCREENS, WATERMARK, BACKGROUND DESIGNS, HOLOGRAM AND OTHER SECURITY FEATURES NOT LISTED AND DO EXCEED DOCUMENT SECURITY INDUSTRY GUIDELINE

December 22, 2025	
GJ Report No. G796921143	
SUT CORNERED RECT. MODIFIED BRILLIANT	
6.67 X 4.75 X 4.53 MM	
Carat Weight	2.57 CARATS
Color Grade	G
Clarity Grade	VS 1
Depth	67.1%
Crown Angle	66°
Pavilion Angle	Medium
Culet	Pointed
Polish	EXCELLENT
Symmetry	EXCELLENT
Fluorescence	NONE
Inscriptions(s)	I691/G796921143

Comments:

The Laboratory Grown Diamond was  
grown by Chemical Vapor Deposition  
(CVD) growth process.  
type IIG.