



ELECTRONIC COPY

LG759522610
Report verification at igi.org



January 5, 2026
IGI Report Number **LG759522610**
Description **LABORATORY GROWN DIAMOND**
Shape and Cutting Style **EMERALD CUT**
Measurements **22.67 X 15.26 X 9.17 MM**
GRADING RESULTS
Carat Weight **35.08 CARATS**
Color Grade **FANCY VIVID PINK**
Clarity Grade **VS 2**

January 5, 2026
IGI Report Number **LG759522610**
Description **LABORATORY GROWN DIAMOND**
Shape and Cutting Style **EMERALD CUT**
Measurements **22.67 X 15.26 X 9.17 MM**

GRADING RESULTS

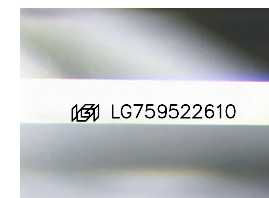
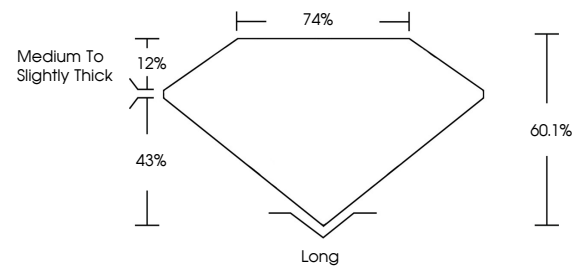
Carat Weight **35.08 CARATS**
Color Grade **FANCY VIVID PINK**
Clarity Grade **VS 2**

ADDITIONAL GRADING INFORMATION

Polish **EXCELLENT**
Symmetry **EXCELLENT**
Fluorescence **STRONG**
Inscription(s) **IGI LG759522610**

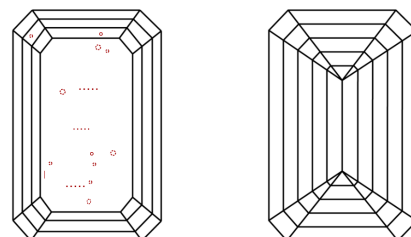
Comments: This Laboratory Grown Diamond was created by Chemical Vapor Deposition (CVD) growth process.
Indications of post-growth treatment.

PROPORTIONS



Sample Image Used

CLARITY CHARACTERISTICS



KEY TO SYMBOLS

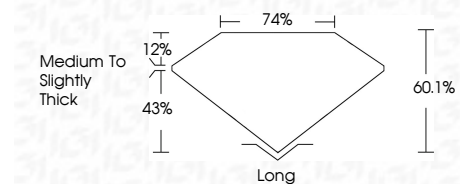
Red symbols indicate internal characteristics.
Green symbols indicate external characteristics.

COLOR

D E F G H I J Faint Very Light Light

CLARITY

FL	IF	VS ¹⁻²	VS ¹⁻²	SI ¹⁻²	I ¹⁻³
Flawless	Internally Flawless	Very Very Slightly Included	Very Slightly Included	Slightly Included	Included



ADDITIONAL GRADING INFORMATION

Polish **EXCELLENT**
Symmetry **EXCELLENT**
Fluorescence **STRONG**
Inscription(s) **IGI LG759522610**
Comments: This Laboratory Grown Diamond was created by Chemical Vapor Deposition (CVD) growth process.
Indications of post-growth treatment.



January 5, 2026
IGI Report No **LG759522610**
EMERALD CUT
35.08 CARATS
Carat Weight **FANCY VIVID PINK**
Color Grade **VS 2**
Clarity Grade **60.1%**
Depth **74%**
Table **Medium to Slightly Thick**
Girdle **Long**
Culet **EXCELLENT**
Polish **EXCELLENT**
Symmetry **STRONG**
Fluorescence **IGI LG759522610**
Inscription(s)
Comments: This Laboratory Grown Diamond was created by Chemical Vapor Deposition (CVD) growth process.
Indications of post-growth treatment.