

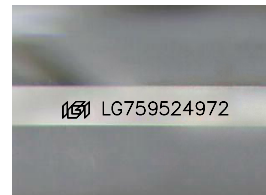
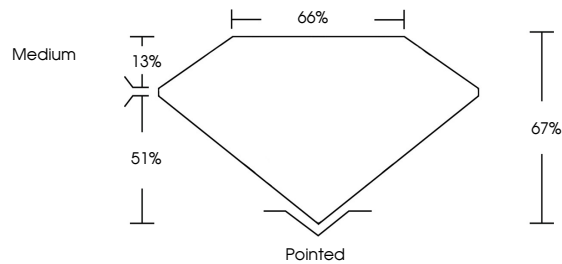


**INTERNATIONAL  
GEMOLOGICAL  
INSTITUTE**

**ELECTRONIC COPY**

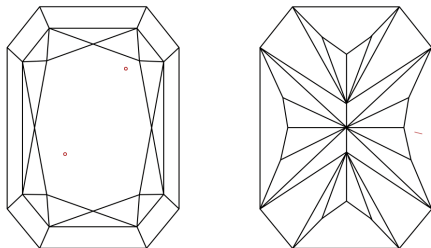
LG759524972  
Report verification at [igi.org](https://igi.org)

## PROPORTIONS



Sample Image Used

## CLARITY CHARACTERISTICS



## KEY TO SYMBOLS

Red symbols indicate internal characteristics.  
Green symbols indicate external characteristics.

**COLOR**

D E F G H I J Faint Very Light Light

## CLARITY

FL	IF	VVS <sup>1-2</sup>	VS <sup>1-2</sup>	SI <sup>1-2</sup>	I <sup>1-3</sup>
Flawless	Internally Flawless	Very Very Slightly Included	Very Slightly Included	Slightly Included	Included

## LABORATORY GROWN DIAMOND REPORT



December 22, 2025

IGI Report Number **LG759524972**

Description	LABORATORY GROWN DIAMOND
-------------	--------------------------

Shape and Cutting Style

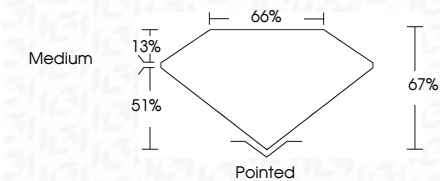
Measurements 10.17 X 7.02 X 4.70 MM

## GRADING RESULTS

Carat Weight **2.92 CARATS**

Color Grade |

Clarity Grade VS 1



### ADDITIONAL GRADING INFORMATION

Polish **EXCELLENT**Symmetry **EXCELLENT**Fluorescence **NONE**Inscription(s)  LG759524972

Comments: This Laboratory Grown Diamond was created by Chemical Vapor Deposition (CVD) growth process.  
Type IIa



IG



© IGI 2020, International Gemological Institute

FD - 10 20

**www.igi.org**

THIS DOCUMENT WAS PRODUCED WITH THE FOLLOWING SECURITY MEASURES: SPECIAL DOCUMENT PAPER, INK SCREENS, WATERMARK, BACKGROUND DESIGNS, HOLOGRAM AND OTHER SECURITY FEATURES NOT LISTED AND DO EXCEED DOCUMENT SECURITY INDUSTRY GUIDELINES

December 22, 2025	
GJ CORNER LG769524P72	
GI REPORTED RECT. MODIFIED BRILLIANT	
2.92 CARATS	
1	
VS 1	Poished
67%	EXCELLENT
66%	EXCELLENT
Medium	NONE
	881LG769524P72
Color Grade	
Clarity Grade	
Depth	
Table	
Girdle	
Culet	
Facet	
Symmetry	
Fluorescence	
Inscription(s)	
Comments:	
	Very Fine Growth Diamond was treated by Chemical Vapor Deposition (CVD) growth process. Type IIA