



ELECTRONIC COPY

LG759527169
Report verification at igi.org



December 25, 2025

IGI Report Number **LG759527169**

Description **LABORATORY GROWN DIAMOND**

Shape and Cutting Style **EMERALD CUT**

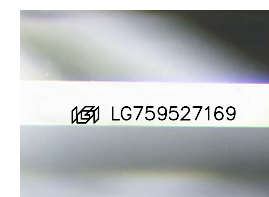
Measurements **8.34 X 6.15 X 4.13 MM**

GRADING RESULTS

Carat Weight **2.10 CARATS**

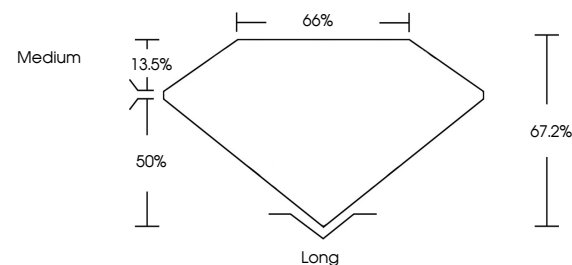
Color Grade **E**

Clarity Grade **VS 1**

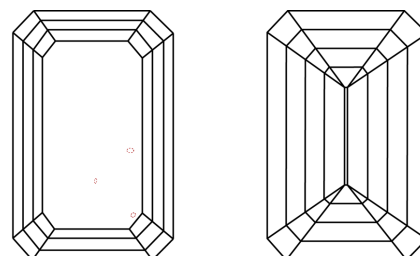


Sample Image Used

PROPORTIONS



CLARITY CHARACTERISTICS



KEY TO SYMBOLS

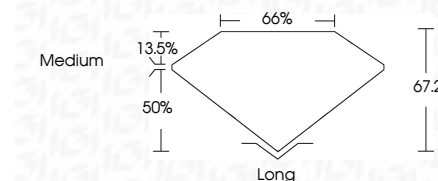
Red symbols indicate internal characteristics.
Green symbols indicate external characteristics.

COLOR

D E F G H I J Faint Very Light Light

CLARITY

FL	IF	VS ¹⁻²	VS ¹⁻²	SI ¹⁻²	I ¹⁻³
Flawless	Internally Flawless	Very Very Slightly Included	Very Slightly Included	Slightly Included	Included



ADDITIONAL GRADING INFORMATION

Polish **EXCELLENT**

Symmetry **EXCELLENT**

Fluorescence **NONE**

Inscription(s) **IGI LG759527169**

Comments: This Laboratory Grown Diamond was created by Chemical Vapor Deposition (CVD) growth process. Type IIa



IGI



December 25, 2025
IGI Report No. LG759527169
EMERALD CUT

8.34 X 6.15 X 4.13 MM

2.10 CARATS
E

Carat Weight
Color Grade
Clarity Grade
Table
Depth
Girdle
Medium

VS 1
67.2%
65%
Medium

Long
EXCELLENT
EXCELLENT
NONE
IGI LG759527169

Culet
Polish
Symmetry
Fluorescence
Inscription(s)

Comments: This Laboratory Grown Diamond was created by Chemical Vapor Deposition (CVD) growth process. Type IIa