



ELECTRONIC COPY

LABORATORY GROWN DIAMOND REPORT

December 25, 2025
IGI Report Number LG759530653
Description LABORATORY GROWN DIAMOND
Shape and Cutting Style CUT CORNERED RECTANGULAR MODIFIED BRILLIANT
Measurements 10.10 X 6.91 X 4.70 MM

GRADING RESULTS

Carat Weight 2.84 CARATS
Color Grade F
Clarity Grade VS 2

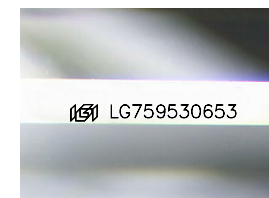
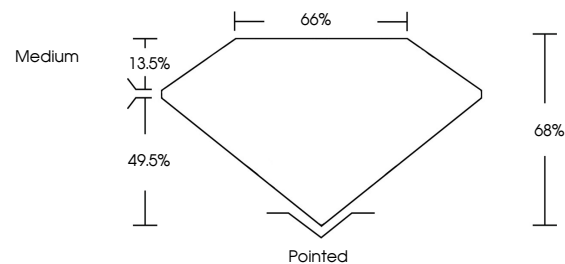
ADDITIONAL GRADING INFORMATION

Polish EXCELLENT
Symmetry EXCELLENT
Fluorescence NONE

Inscription(s) IGI LG759530653

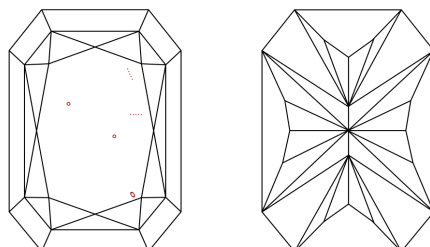
Comments: This Laboratory Grown Diamond was created by Chemical Vapor Deposition (CVD) growth process.
Type IIa

PROPORTIONS



Sample Image Used

CLARITY CHARACTERISTICS



KEY TO SYMBOLS

Red symbols indicate internal characteristics.
Green symbols indicate external characteristics.

COLOR

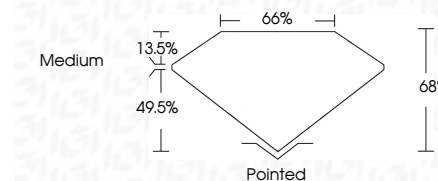
D E F G H I J Faint Very Light Light

CLARITY

FL IF VS¹⁻² VS¹⁻² SI¹⁻² I¹⁻³
Flawless Internally Flawless Very Very Slightly Included Very Slightly Included Slightly Included Included



December 25, 2025
IGI Report Number LG759530653
Description LABORATORY GROWN DIAMOND
Shape and Cutting Style CUT CORNERED RECTANGULAR MODIFIED BRILLIANT
Measurements 10.10 X 6.91 X 4.70 MM
GRADING RESULTS
Carat Weight 2.84 CARATS
Color Grade F
Clarity Grade VS 2



ADDITIONAL GRADING INFORMATION

Polish EXCELLENT
Symmetry EXCELLENT
Fluorescence NONE
Inscription(s) IGI LG759530653
Comments: This Laboratory Grown Diamond was created by Chemical Vapor Deposition (CVD) growth process.
Type IIa



December 25, 2025
IGI Report No LG759530653
CUT CORNERED RECT. MODIFIED BRILLIANT
10.10 X 6.91 X 4.70 MM
2.84 CARATS
F
VS 2
68%
49.5%
Medium
Pointed
EXCELLENT
EXCELLENT
NONE
IGI LG759530653
Comments: This Laboratory Grown Diamond was created by Chemical Vapor Deposition (CVD) growth process.
Type IIa