



**ELECTRONIC COPY**

LG760501529  
Report verification at igi.org



December 24, 2025

IGI Report Number **LG760501529**

Description **LABORATORY GROWN DIAMOND**

Shape and Cutting Style **CUT CORNERED  
RECTANGULAR MODIFIED  
BRILLIANT**

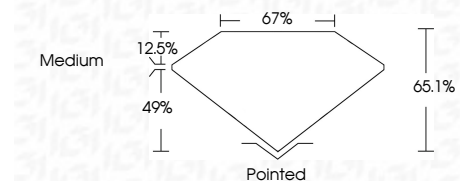
Measurements **10.34 X 7.25 X 4.72 MM**

**GRADING RESULTS**

Carat Weight **3.05 CARATS**

Color Grade **D**

Clarity Grade **VVS 2**



**ADDITIONAL GRADING INFORMATION**

Polish **EXCELLENT**

Symmetry **EXCELLENT**

Fluorescence **NONE**

Inscription(s) **IGI LG760501529**

Comments: This Laboratory Grown Diamond was created by Chemical Vapor Deposition (CVD) growth process. Type IIa



|                        |                           |  |
|------------------------|---------------------------|--|
| December 24, 2025      | IGI Report No LG760501529 | <b>CUT CORNERED RECT. MODIFIED BRILLIANT</b> |
| 3.05 CARATS            | <b>D</b>                  |  |
| 10.34 X 7.25 X 4.72 MM | <b>VVS 2</b>              |  |
| Color Grade            | <b>D</b>                  |  |
| Depth                  | <b>65.1%</b>              |  |
| Table                  | <b>67%</b>                |  |
| Grades                 | <b>Medium</b>             |  |
| Culet                  | <b>Pointed</b>            |  |
| Polish                 | <b>EXCELLENT</b>          |  |
| Symmetry               | <b>EXCELLENT</b>          |  |
| Fluorescence           | <b>NONE</b>               |  |
| Inscription(s)         | <b>IGI LG760501529</b>    |  |

Comments: This Laboratory Grown Diamond was created by Chemical Vapor Deposition (CVD) growth process. Type IIa

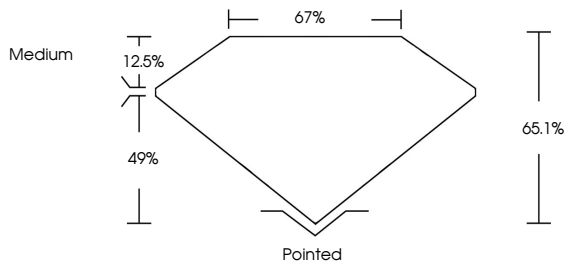
December 24, 2025  
IGI Report Number **LG760501529**  
Description **LABORATORY GROWN DIAMOND**  
Shape and Cutting Style **CUT CORNERED RECTANGULAR  
MODIFIED BRILLIANT**  
Measurements **10.34 X 7.25 X 4.72 MM**

**GRADING RESULTS**  
Carat Weight **3.05 CARATS**  
Color Grade **D**  
Clarity Grade **VVS 2**

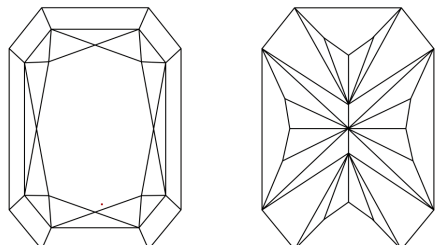
**ADDITIONAL GRADING INFORMATION**  
Polish **EXCELLENT**  
Symmetry **EXCELLENT**  
Fluorescence **NONE**  
Inscription(s) **IGI LG760501529**

Comments: This Laboratory Grown Diamond was created by Chemical Vapor Deposition (CVD) growth process. Type IIa

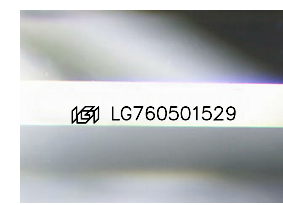
**PROPORTIONS**



**CLARITY CHARACTERISTICS**



**KEY TO SYMBOLS**  
Red symbols indicate internal characteristics.  
Green symbols indicate external characteristics.



Sample Image Used

**COLOR**

|   |   |   |   |   |   |   |       |            |       |
|---|---|---|---|---|---|---|-------|------------|-------|
| D | E | F | G | H | I | J | Faint | Very Light | Light |
|---|---|---|---|---|---|---|-------|------------|-------|

**CLARITY**

|          |                     |                             |                        |                   |                  |
|----------|---------------------|-----------------------------|------------------------|-------------------|------------------|
| FL       | IF                  | VVS <sup>1-2</sup>          | VS <sup>1-2</sup>      | SI <sup>1-2</sup> | I <sup>1-3</sup> |
| Flawless | Internally Flawless | Very Very Slightly Included | Very Slightly Included | Slightly Included | Included         |

