



ELECTRONIC COPY

LG760502462
Report verification at igi.org



December 30, 2025
IGI Report Number **LG760502462**
Description **LABORATORY GROWN DIAMOND**
Shape and Cutting Style **SQUARE CUSHION MODIFIED BRILLIANT**
Measurements **11.28 X 10.80 X 7.24 MM**
GRADING RESULTS
Carat Weight **8.08 CARATS**
Color Grade **FANCY VIVID YELLOW**
Clarity Grade **VS 1**

LABORATORY GROWN DIAMOND REPORT

December 30, 2025
IGI Report Number **LG760502462**
Description **LABORATORY GROWN DIAMOND**
Shape and Cutting Style **SQUARE CUSHION MODIFIED BRILLIANT**
Measurements **11.28 X 10.80 X 7.24 MM**

GRADING RESULTS

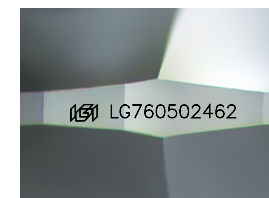
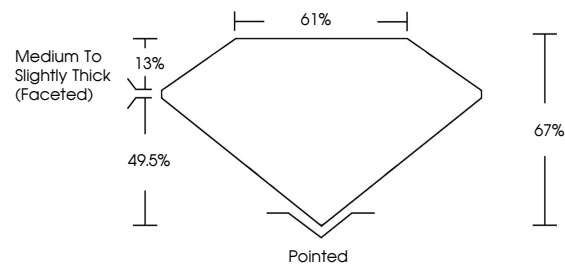
Carat Weight **8.08 CARATS**
Color Grade **FANCY VIVID YELLOW**
Clarity Grade **VS 1**

ADDITIONAL GRADING INFORMATION

Polish **EXCELLENT**
Symmetry **EXCELLENT**
Fluorescence **NONE**
Inscription(s) **IGI LG760502462**

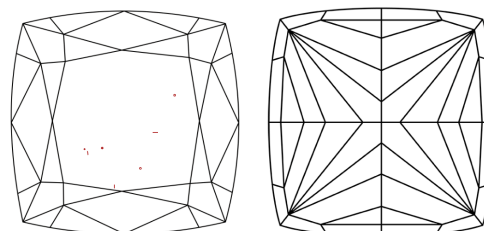
Comments: This Laboratory Grown Diamond was created by Chemical Vapor Deposition (CVD) growth process.

PROPORTIONS



Sample Image Used

CLARITY CHARACTERISTICS



KEY TO SYMBOLS

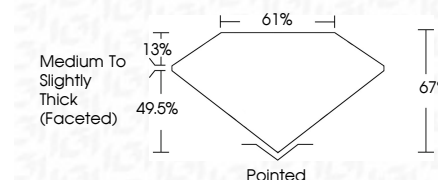
Red symbols indicate internal characteristics.
Green symbols indicate external characteristics.

COLOR

D E F G H I J Faint Very Light Light

CLARITY

FL	IF	VS ¹⁻²	VS ¹⁻²	SI ¹⁻²	I ¹⁻³
Flawless	Internally Flawless	Very Very Slightly Included	Very Slightly Included	Slightly Included	Included



ADDITIONAL GRADING INFORMATION

Polish **EXCELLENT**
Symmetry **EXCELLENT**
Fluorescence **NONE**
Inscription(s) **IGI LG760502462**
Comments: This Laboratory Grown Diamond was created by Chemical Vapor Deposition (CVD) growth process.



IGI



December 30, 2025
IGI Report No **LG760502462**
SQUARE CUSHION MODIFIED BRILLIANT
11.28 X 10.80 X 7.24 MM
Carat Weight **8.08 CARATS**
Color Grade **FANCY VIVID YELLOW**
Clarity Grade **VS 1**
Table **61%**
Depth **49.5%**
Girdle **Medium to Slightly Thick (Faceted)**
Culet **Pointed**
Polish **EXCELLENT**
Symmetry **EXCELLENT**
Fluorescence **NONE**
Inscription(s) **IGI LG760502462**
Comments: This Laboratory Grown Diamond was created by Chemical Vapor Deposition (CVD) growth process.