



ELECTRONIC COPY

LG760506280
Report verification at igi.org



February 6, 2026

IGI Report Number **LG760506280**

Description **LABORATORY GROWN DIAMOND**

Shape and Cutting Style **EMERALD CUT**

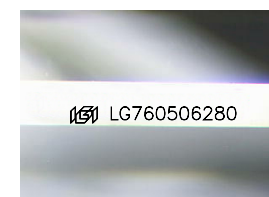
Measurements **7.19 X 4.79 X 2.94 MM**

GRADING RESULTS

Carat Weight **1.02 CARAT**

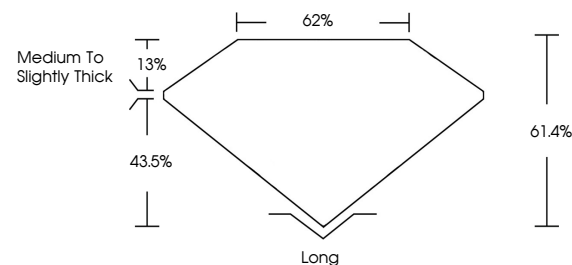
Color Grade **LIGHT BROWN**

Clarity Grade **VS 1**

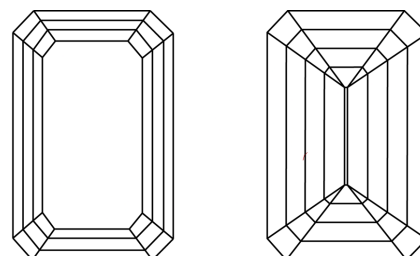


Sample Image Used

PROPORTIONS



CLARITY CHARACTERISTICS



KEY TO SYMBOLS

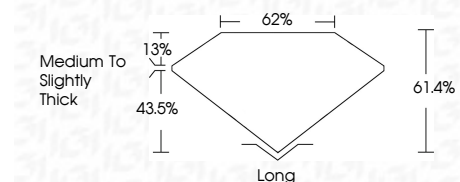
Red symbols indicate internal characteristics.
Green symbols indicate external characteristics.

COLOR

D E F G H I J Faint Very Light Light

CLARITY

FL	IF	VS ¹⁻²	VS ¹⁻²	SI ¹⁻²	I ¹⁻³
Flawless	Internally Flawless	Very Very Slightly Included	Very Slightly Included	Slightly Included	Included



ADDITIONAL GRADING INFORMATION

Polish **EXCELLENT**

Symmetry **EXCELLENT**

Fluorescence **NONE**

Inscription(s) **IGI LG760506280**

Comments: This Laboratory Grown Diamond was created by Chemical Vapor Deposition (CVD) growth process.



IGI



February 6, 2026
IGI Report No. LG760506280
EMERALD CUT

1.02 CARAT
Carat Weight
LIGHT BROWN
Color Grade

VS 1
Clarity Grade
61.4%
Table
62%
Girdle
Medium to Slightly Thick
Culet
Long
Polish
EXCELLENT
Symmetry
EXCELLENT
Fluorescence
NONE
Inscription(s)
IGI LG760506280

Comments: This Laboratory Grown Diamond was created by Chemical Vapor Deposition (CVD) growth process.